

## 2008-2009 Influenza Season Week 34 ending August 29, 2009

*All data are preliminary and may change as more reports are received.*

**Synopsis:** During week 34 (August 23-29, 2009), influenza activity increased in the United States.

- Since mid-April to August 30, 2009, a total of 9,079 hospitalizations and 593 deaths associated with 2009 influenza A (H1N1) viruses have been reported to CDC an increase from 8,843 hospitalizations and 556 deaths from the prior week.
- During week 34:
  - 1,109 (17.3%) specimens tested by U.S. World Health Organization (WHO) and National Respiratory and Enteric Virus Surveillance System (NREVSS) collaborating laboratories and reported to CDC/Influenza Division were positive for influenza.
  - 97% of all subtyped influenza A viruses being reported to CDC were 2009 influenza A (H1N1) viruses.
  - One human infection with a novel influenza A virus was reported.
  - The proportion of deaths attributed to pneumonia and influenza (P&I) was below the epidemic threshold.
  - One influenza-associated pediatric death was reported and was associated with a 2009 influenza A (H1N1) virus infection.
  - The proportion of outpatient visits for influenza-like illness (ILI) was below the national baseline. Region IV reported ILI above its region-specific baseline.
  - Six states and Puerto Rico reported geographically widespread influenza activity, 13 states reported regional influenza activity, 10 states and the District of Columbia reported local influenza activity, 19 states reported sporadic influenza activity, two states reported no influenza activity, and Guam and the U.S. Virgin Islands did not report.

### National and Regional Summary of Select Surveillance Components

HHS Surveillance Regions*	Data for current week			Data cumulative for the season						
	Out-patient ILI†	% positive for flu‡	Number of jurisdictions reporting regional or widespread activity§	A (H1)	A (H3)	2009 A (H1N1)	A (unable to sub-type)¶	A (Subtyping not performed)	B	Pediatric Deaths
<b>Nation</b>	Normal	17.3%	20 of 54	8,211	4,026	38,112	830	19,997	10,821	111
<b>Region I</b>	Normal	8.3%	0 of 6	585	305	2,933	13	1,706	820	4
<b>Region II</b>	Normal	2.9%	2 of 4	297	228	1,831	21	2,391	714	20
<b>Region III</b>	Normal	15.7%	2 of 6	1,251	220	4,378	20	1,045	1,363	10
<b>Region IV</b>	Elevated	19.9%	8 of 8	910	444	4,850	84	3,530	1,298	10
<b>Region V</b>	Normal	12.0%	0 of 6	1,661	212	8,365	199	884	1,422	18
<b>Region VI</b>	Normal	24.6%	2 of 5	830	309	3,698	7	5,013	2,667	16
<b>Region VII</b>	Normal	15.4%	1 of 4	537	86	1,149	118	553	537	0
<b>Region VIII</b>	Normal	13.8%	1 of 6	540	219	1,569	80	1,784	503	9
<b>Region IX</b>	Normal	24.3%	3 of 5	1,210	1,679	6,681	74	2,559	806	21
<b>Region X</b>	Normal	20.6%	1 of 4	390	324	2,658	214	532	691	3

\* HHS regions (Region I: CT, ME, MA, NH, RI, VT; Region II: NJ, NY, Puerto Rico, US Virgin Islands; Region III: DE, DC, MD, PA, VA, WV; Region IV: AL, FL, GA, KY, MS, NC, SC, TN; Region V: IL, IN, MI, MN, OH, WI; Region VI: AR, LA, NM, OK, TX; Region VII: IA, KS, MO, NE; Region VIII: CO, MT, ND, SD, UT, WY; Region IX: AZ, CA, Guam, HI, NV; and Region X: AK, ID, OR, WA)

† Elevated means the % of visits for ILI is at or above the national or region-specific baseline

‡ National data are for current week; regional data are for the most recent three weeks

§ Includes all 50 states, the District of Columbia, Guam, Puerto Rico, and U.S. Virgin Islands

¶ The majority of influenza A viruses that cannot be sub-typed as seasonal influenza viruses are 2009 A (H1N1) influenza viruses upon further testing

**U.S. Virologic Surveillance:** WHO and NREVSS collaborating laboratories located in all 50 states and Washington D.C. report to CDC the number of respiratory specimens tested for influenza and the number positive by influenza type and subtype. The results of tests performed during the current week are summarized in the table below.

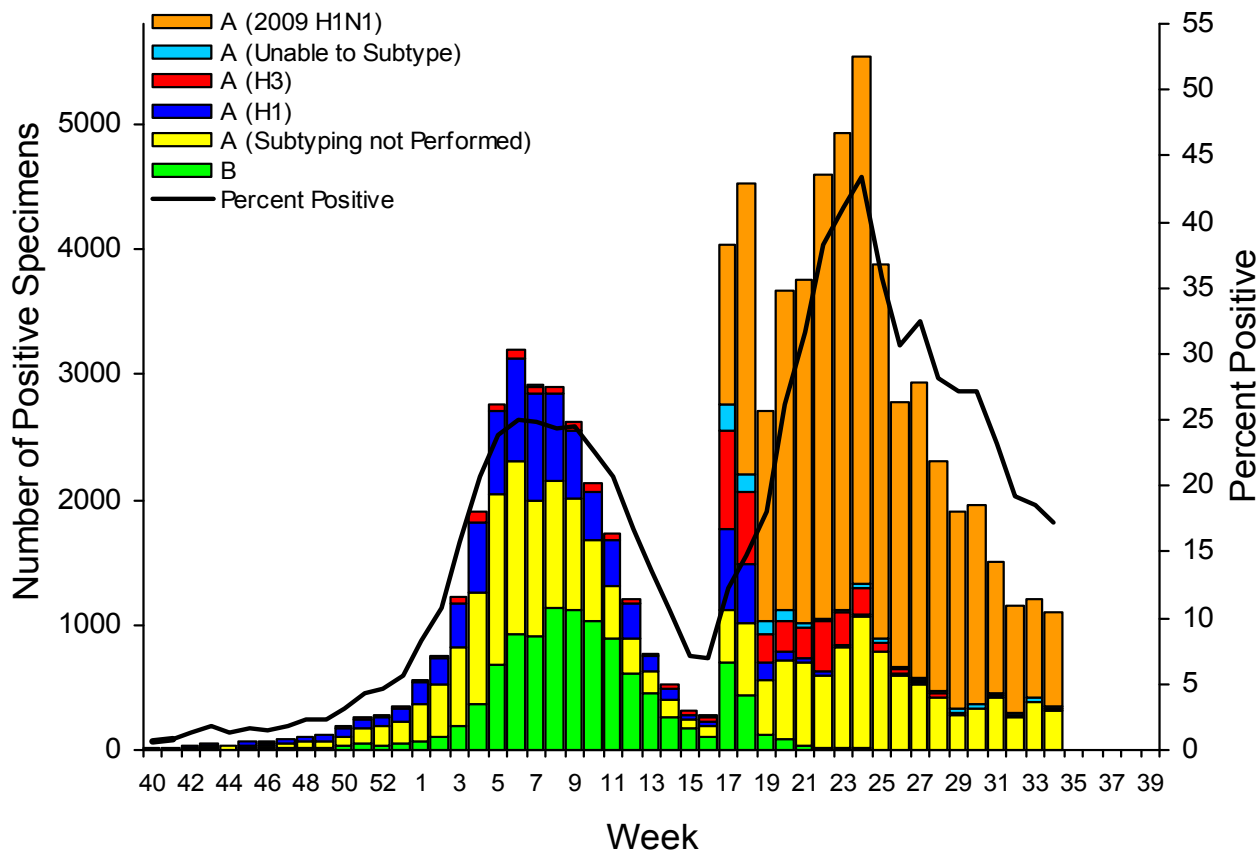
	<b>Week 34</b>
<b>No. of specimens tested</b>	6,410
<b>No. of positive specimens (%)</b>	1,109 (17.3%)
<b><i>Positive specimens by type/subtype</i></b>	
<b>Influenza A</b>	1,105 (99.6%)
<b>A (2009 H1N1)</b>	755 (68.3%)
<b>A (subtyping not performed)</b>	311 (28.1%)
<b>A (unable to subtype)</b>	18 (1.6%)
<b>A (H3)</b>	11 (1.0%)
<b>A (H1)</b>	10 (0.9%)
<b>Influenza B</b>	4 (0.4%)

During week 34, seasonal influenza A (H1) and A (H3) and B viruses co-circulated at low levels with 2009 influenza A (H1N1) viruses. 97% of all subtyped influenza A viruses being reported to CDC this week were 2009 influenza A (H1N1) viruses.

The unusually high percentage of specimens testing positive for influenza by WHO and NREVSS collaborating laboratories remained higher during week 34 than is typically seen this time of year, and may be due to a combination of factors including higher than normal circulation of influenza in the summer with the emergence of the 2009 H1N1 virus, changes in testing practices by health care providers, triaging of specimens by public health laboratories, an increase in the number of specimens collected from outbreaks, and other factors.

As of September 4, 2009, 9,079 hospitalizations and 593 deaths (16 deaths in individuals 0-4 years, 93 deaths in individuals 5-24 years, 249 deaths in adults 25-49 years, 171 deaths in adults 50-64 years, 57 deaths in adults age 65 and older, and 7 deaths for which age was not reported) associated with 2009 influenza A (H1N1) virus have been identified by CDC and state and local public health departments (<http://www.cdc.gov/h1n1flu/update.htm>).

## Influenza Positive Tests Reported to CDC by U.S. WHO/NREVSS Collaborating Laboratories, National Summary, 2008-09



**Novel Influenza A Virus:** One case of human infection with a novel influenza A virus was reported by the Kansas Department of Health and Environment. The case patient was infected with a swine influenza A (H3N2) virus and reported contact with pigs in the week preceding symptom onset, July 28, 2009. The patient did not require hospitalization and has fully recovered. Although the investigation is ongoing, there does not appear to have been sustained human-to-human transmission with this virus. Early identification and investigation of these cases is critical to evaluate the extent of the outbreak and possible human-to-human transmission. Surveillance for human infections with novel influenza A viruses continues, even with the sustained community transmission of the 2009 H1N1 virus.

**Antigenic Characterization:** CDC has antigenically characterized 2,112 seasonal human influenza viruses [1,189 influenza A (H1), 227 influenza A (H3) and 696 influenza B viruses] collected by U.S. laboratories since October 1, 2008, and 493 2009 influenza A (H1N1) viruses.

All 1,189 seasonal influenza A (H1) viruses are related to the influenza A (H1N1) component of the 2008-09 influenza vaccine (A/Brisbane/59/2007). Two hundred sixteen (95%) of 227 influenza A (H3N2) viruses tested are related to the A (H3N2) vaccine component (A/Brisbane/10/2007) and 11 viruses (5%) tested showed reduced titers with antisera produced against A/Brisbane/10/2007.

All 493 2009 influenza A (H1N1) viruses are related to the A/California/07/2009 (H1N1)pdm reference virus selected by WHO as a potential candidate for 2009 influenza A (H1N1) vaccine.

Influenza B viruses currently circulating can be divided into two distinct lineages represented by the B/Yamagata/16/88 and B/Victoria/02/87 viruses. Seventy-six (11%) of 696 influenza B viruses tested belong to the B/Yamagata lineage and are related to the vaccine strain (B/Florida/04/2006). The remaining 620 (89%) viruses belong to the B/Victoria lineage and are not related to the vaccine strain.

Data on antigenic characterization should be interpreted with caution given that antigenic characterization data are based on hemagglutination inhibition (HI) testing using a panel of reference ferret antisera, and results may not correlate with clinical protection against circulating viruses provided by influenza vaccination.

Annual influenza vaccination is expected to provide the best protection against those virus strains that are related to the vaccine strains, but limited to no protection may be expected when the vaccine and circulating virus strains are so different as to be from different lineages, as is seen with the two lineages of influenza B viruses. Antigenic characterization of 2009 influenza A (H1N1) viruses indicates that these viruses are antigenically and genetically unrelated to seasonal influenza A (H1N1) viruses, suggesting that little to no protection would be expected from vaccination with seasonal influenza vaccine.

**Antiviral Resistance:** Since October 1, 2008, 1,148 seasonal influenza A (H1N1), 255 influenza A (H3N2), 652 influenza B, and 560 2009 influenza A (H1N1) virus isolates have been tested for resistance to the neuraminidase inhibitors (oseltamivir and zanamivir). In addition, 717 2009 influenza A (H1N1) original clinical samples were tested for a single known mutation in the virus that confers oseltamivir resistance. Also, 1,152 seasonal influenza A (H1N1), 252 influenza A (H3N2), and 486 2009 influenza A (H1N1) viruses have been tested for resistance to the adamantanes (amantadine and rimantadine). Three state public health laboratories perform antiviral testing and report their results to CDC. Two additional oseltamivir resistant 2009 influenza A (H1N1) viruses have been identified by these laboratories. The results of antiviral resistance testing performed on these viruses are summarized in the table below.

	Viruses tested (n)	Resistant Viruses, Number (%)	Viruses tested (n)	Resistant Viruses, Number (%)	Viruses tested (n)	Resistant Viruses, Number (%)
		Oseltamivir		Zanamivir		Adamantanes
<b>Seasonal Influenza A (H1N1)</b>	1,148	1,143 (99.6%)	1,148	0 (0)	1,152	6 (0.5%)
<b>Influenza A (H3N2)</b>	255	0 (0)	255	0 (0)	252	245 (100%)
<b>Influenza B</b>	652	0 (0)	652	0 (0)	N/A*	N/A*
<b>2009 Influenza A (H1N1)</b>	1,277	7 <sup>†‡</sup> (0.6)	560	0 (0)	486	486 (100%)

\*The adamantanes (amantadine and rimantadine) are not effective against influenza B viruses.

<sup>†</sup>Two screening tools were used to determine oseltamivir resistance: sequence analysis of viral genes and a neuraminidase inhibition assay.

<sup>‡</sup> Three state public health laboratories perform antiviral resistance testing and report their results to CDC. An additional two oseltamivir resistant 2009 influenza A (H1N1) viruses have been identified by these laboratories, bringing the total number to nine.

2009 influenza A (H1N1) viruses were tested for oseltamivir resistance by a neuraminidase inhibition assay and/or detection of genetic sequence mutation, depending on the type of specimen tested: original clinical samples were examined for a single known mutation in the virus that confers oseltamivir resistance in currently circulating seasonal influenza A (H1N1) viruses, while influenza virus isolates were tested using a neuraminidase inhibition assay that determines the presence or absence of neuraminidase inhibitor resistance, followed by the neuraminidase gene sequence analysis of resistant viruses.

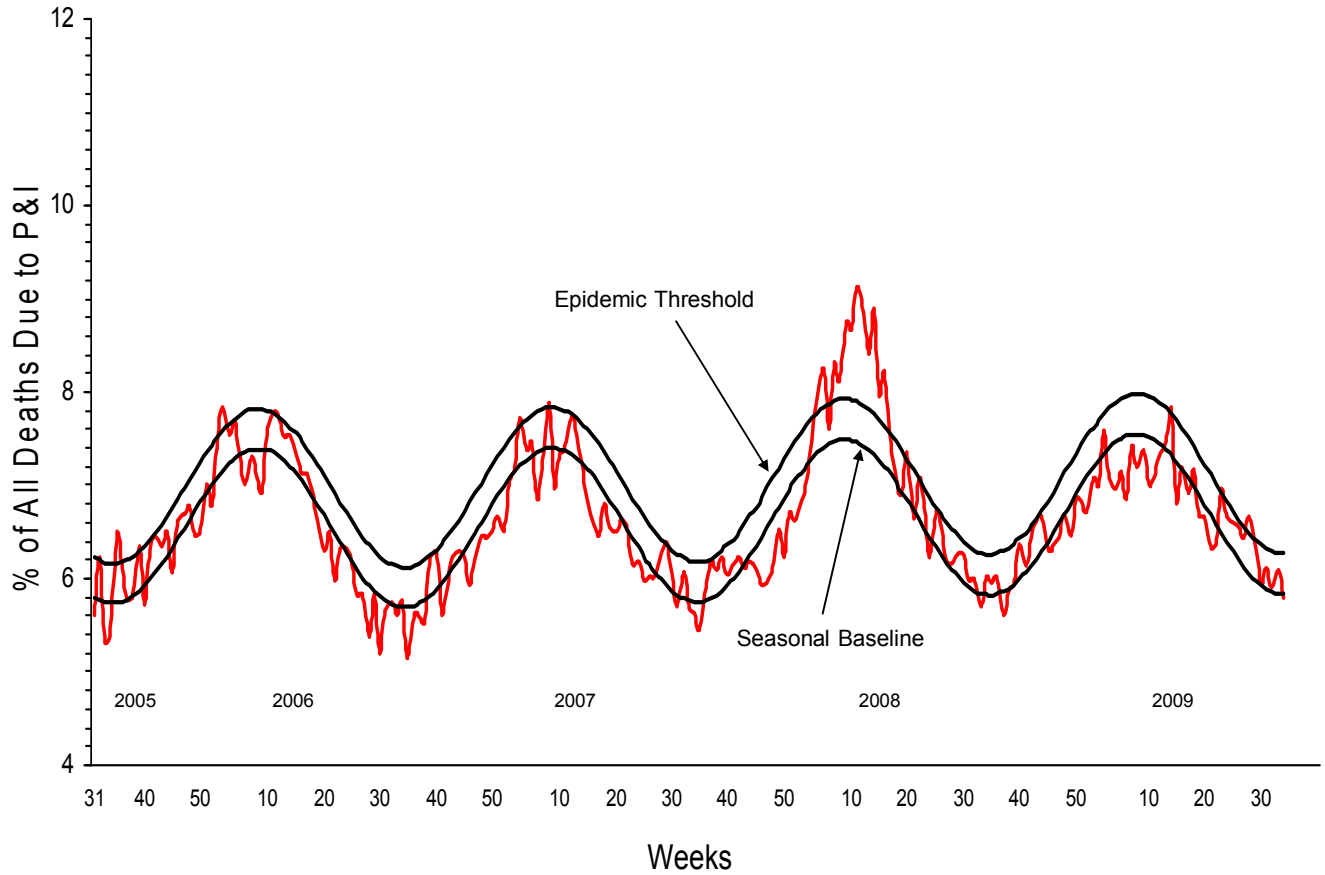
The majority of 2009 influenza A (H1N1) viruses are susceptible to the neuraminidase inhibitor antiviral medication oseltamivir, however rare sporadic cases of oseltamivir resistant 2009 influenza A (H1N1) viruses have been detected worldwide, including nine cases in the United States. All tested viruses retain their sensitivity to the other neuraminidase inhibitor zanamivir. Additional information on antiviral recommendations for treatment and chemoprophylaxis of 2009 influenza A (H1N1) infection is available at <http://www.cdc.gov/h1n1flu/recommendations.htm>. All 2009 influenza A (H1N1) viruses tested to date are resistant to the adamantane antiviral medications, amantadine and rimantadine. Antiviral treatment with either oseltamivir or zanamivir is recommended for all patients with confirmed, probable or suspected cases of 2009 influenza A (H1N1) virus infection who are hospitalized or who are at higher risk for seasonal influenza complications.

Eight of the nine patients had documented exposure to oseltamivir through either treatment or chemoprophylaxis, and the remaining patient is currently under investigation to determine exposure to oseltamivir. Occasional development of oseltamivir resistance during treatment or prophylaxis is not unexpected. Enhanced surveillance is expected to detect additional cases of oseltamivir resistant 2009 influenza A (H1N1) viruses and such cases will be investigated to assess the spread of resistant strains in the community. To prevent the spread of antiviral resistant virus strains, CDC reminds clinicians and the public of the need to continue hand and cough hygiene measures for the duration of any symptoms of influenza (<http://www.cdc.gov/mmwr/preview/mmwrhtml/mm5832a3.htm>).

Three seasonal influenza A (H1N1) viruses collected between February 8 and May 11, 2009, were found to be resistant to both oseltamivir and the adamantanes (amantadine and rimantadine). All seasonal influenza A (H1N1) viruses tested retain their sensitivity to zanamivir. The three dually-resistant viruses represent less than 1% of all seasonal influenza A (H1N1) viruses tested during the 2008-09 influenza season, and as a result, no changes to the influenza antiviral treatment or prophylaxis recommendations will be made at this time. CDC will continue to monitor trends in antiviral resistance over the summer and throughout the upcoming 2009-10 influenza season.

**Pneumonia and Influenza (P&I) Mortality Surveillance:** During week 34, 5.8% of all deaths reported through the 122-Cities Mortality Reporting System were due to P&I. This percentage was below the epidemic threshold of 6.3% for week 34.

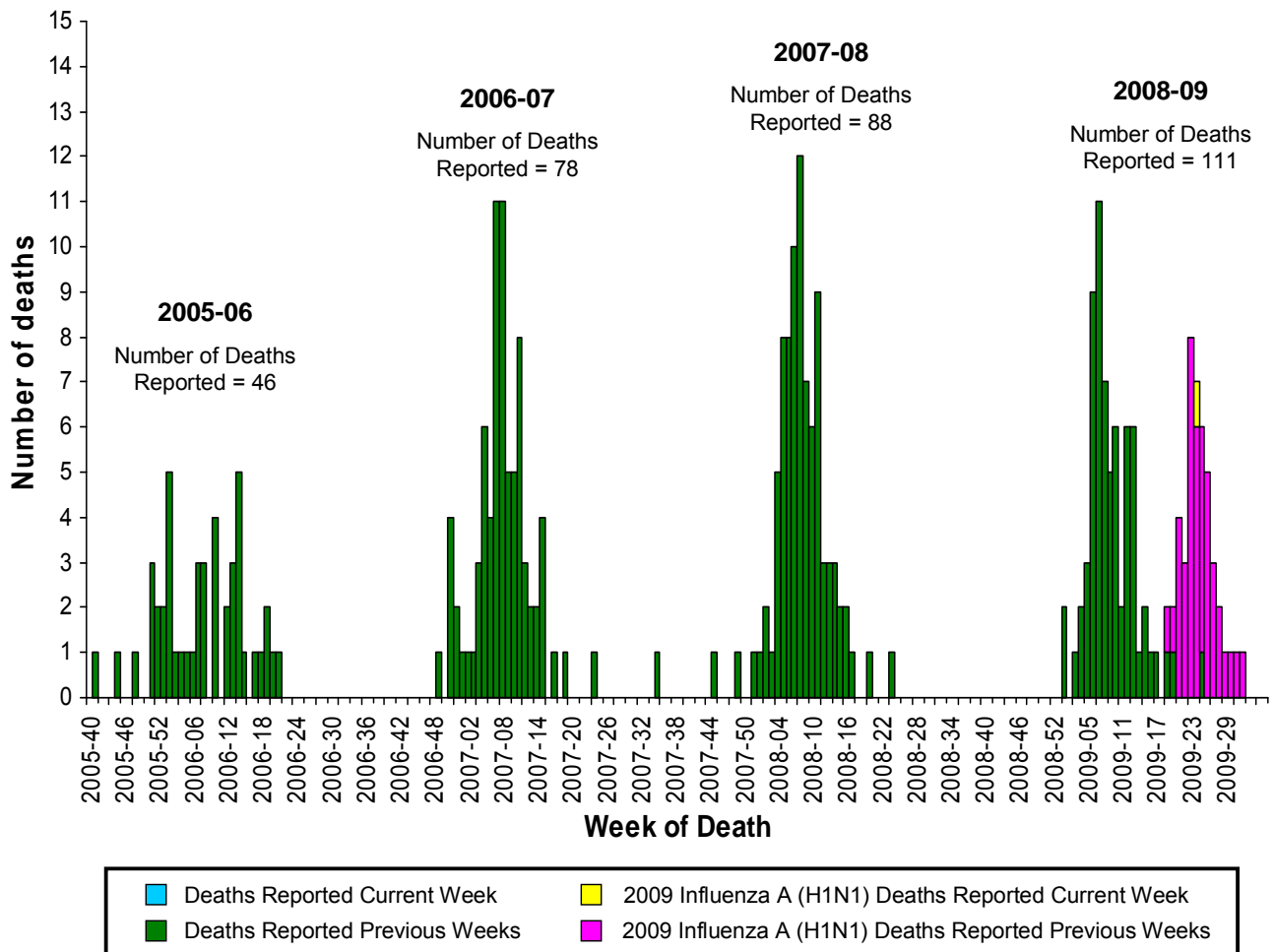
### Pneumonia and Influenza Mortality for 122 U.S. Cities Week ending 8/29/2009



**Influenza-Associated Pediatric Mortality:** One influenza-associated pediatric death was reported to CDC during week 34 (New York). This death was associated with 2009 influenza A (H1N1) virus infection. The death reported this week occurred between June 14 and June 20, 2009. Since September 28, 2008, CDC has received 111 reports of influenza-associated pediatric deaths that occurred during the current influenza season, 43 of which were due to 2009 influenza A (H1N1) virus infections.

Of the 45 children who had specimens collected for bacterial culture from normally sterile sites, 17 (37.8%) were positive; *Staphylococcus aureus* was identified in 11 (64.7%) of the 17 children. Five of the *S. aureus* isolates were sensitive to methicillin and six were methicillin resistant. Fifteen (88.2%) of the 17 children with bacterial coinfections were five years of age or older and 11 (64.7%) of the 17 children were 12 years of age or older. Fourteen (32.6%) of the 43 children with confirmed 2009 influenza A (H1N1) infection had a specimen collected from a normally sterile site; three (21.4%) of the 14 children had a positive bacterial culture (methicillin sensitive *S. aureus*, methicillin resistant *S. aureus* and *Streptococcus constellatus*).

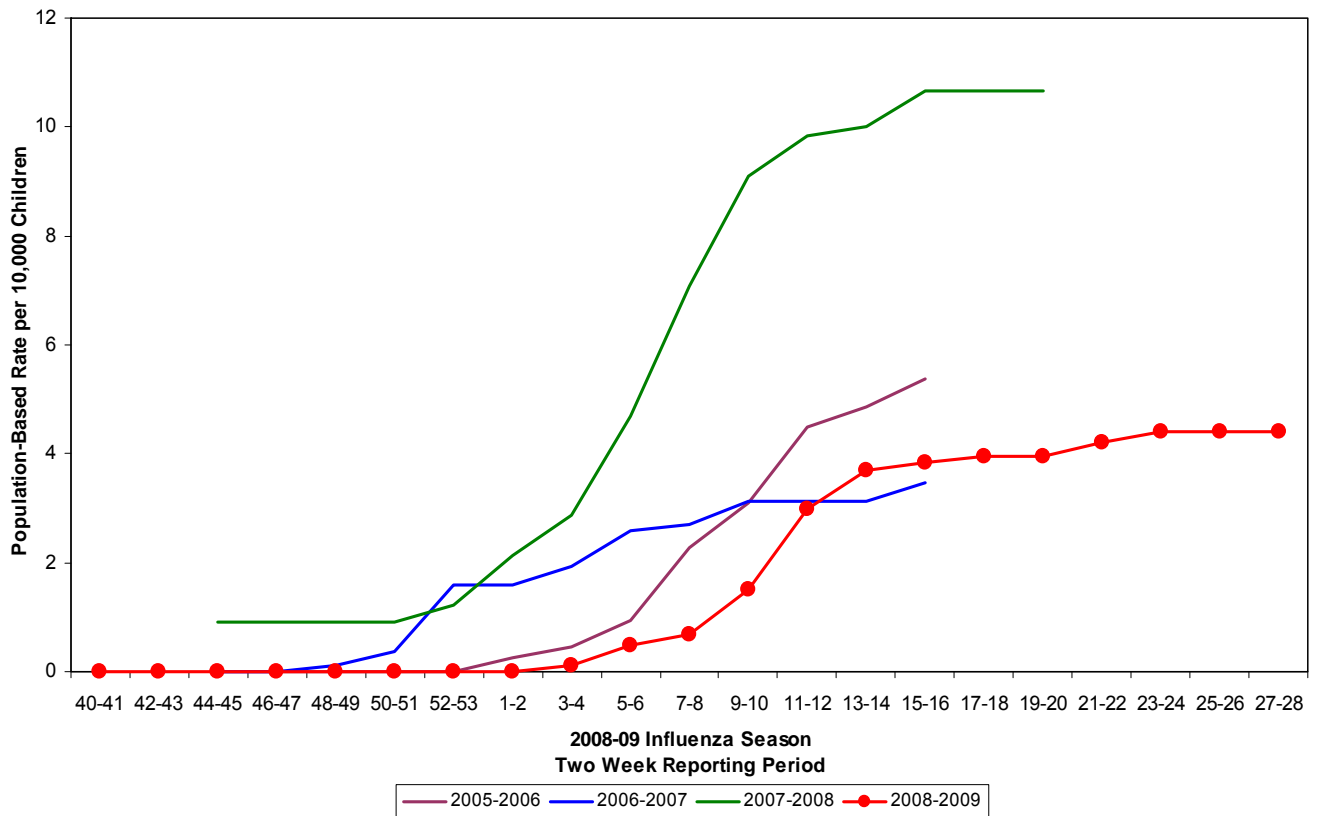
Number of Influenza-Associated Pediatric Deaths by Week of Death:  
2005-06 season to present



**Influenza-Associated Hospitalizations:** Laboratory-confirmed influenza-associated hospitalizations are monitored in two population-based surveillance networks: the New Vaccine Surveillance Network (NVSN) and the Emerging Infections Program (EIP).

During October 12, 2008 to July 11, 2009, the preliminary laboratory-confirmed influenza-associated hospitalization rate for children 0-4 years old in the NVSN was 4.42 per 10,000. Data collection for influenza-associated hospitalizations through the NVSN has been completed for the 2008-09 influenza season. There will be no updates to this system.

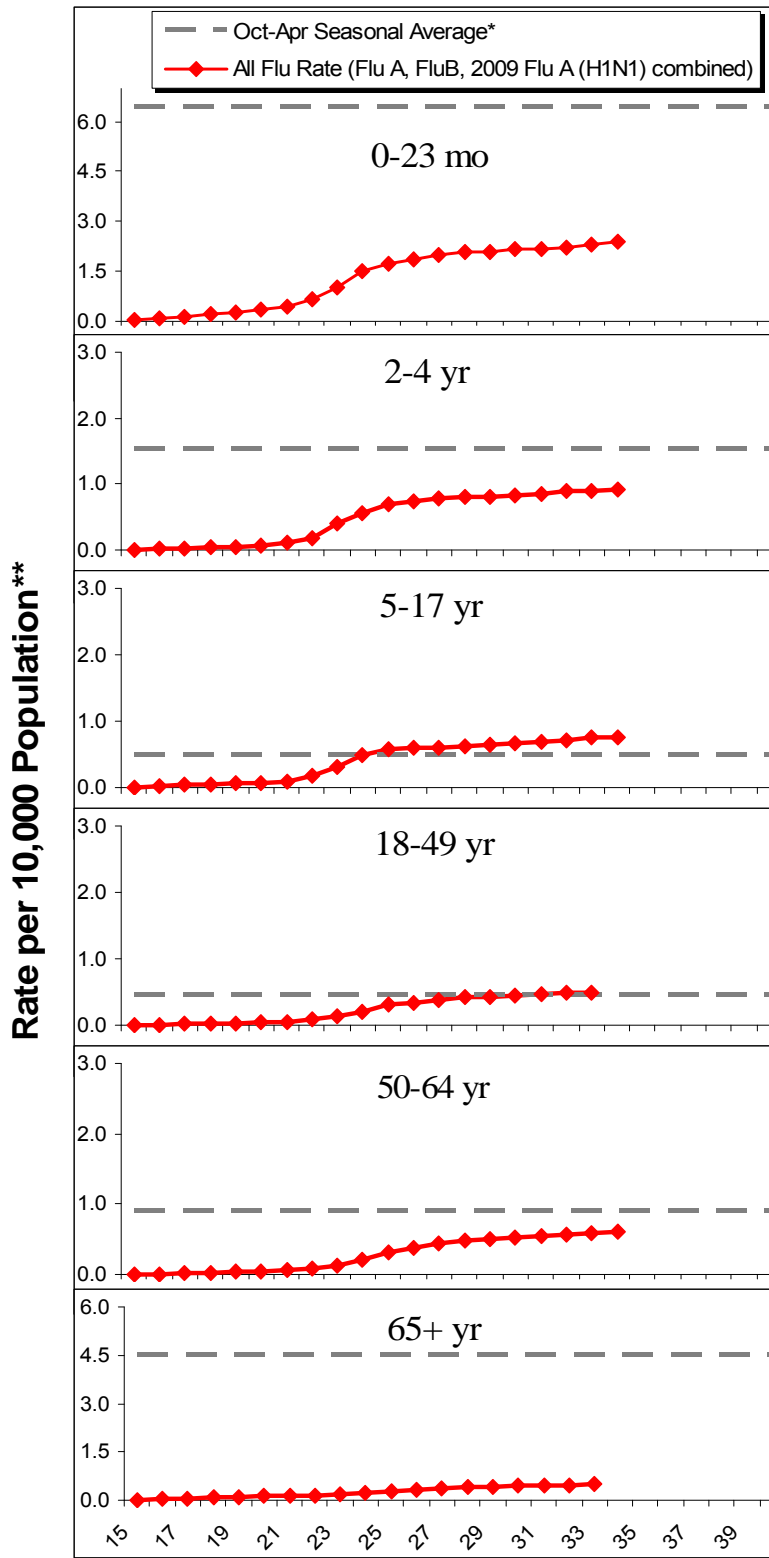
### NVSN Influenza Laboratory-Confirmed Cumulative Hospitalization Rates for Children 0 - 4 Years, 2008-09 and Previous Three Seasons



During April 15, 2009 – August 29, 2009, the following preliminary laboratory-confirmed overall influenza associated hospitalization rates were reported by the EIP (*rates include influenza A, influenza B, and 2009 influenza A (H1N1)*):

Rates for children aged 0-23 months, 2-4 years, and 5-17 years were 2.4, 0.9, and 0.8 per 10,000, respectively. Rates for adults aged 18-49 years, 50-64 years, and ≥ 65 years, the overall flu rates were 0.5, 0.6, and 0.5 per 10,000, respectively.

## EIP Influenza Laboratory-Confirmed Cumulative Hospitalization Rates, Spring/Summer 2009

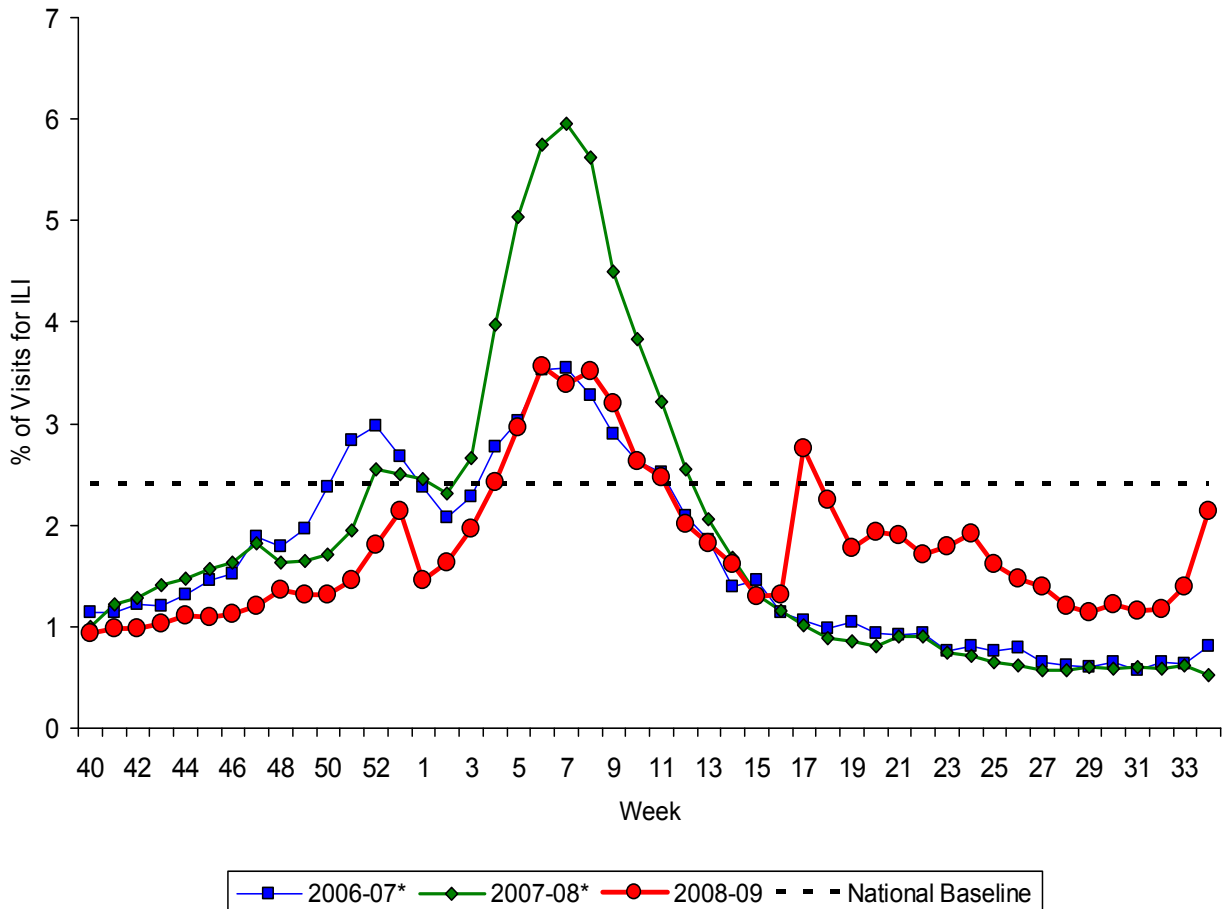


\*This value represents an age group-specific average influenza rate from October 1 to April 30 from the 2005-06, 2006-07, and 2007-08 influenza seasons.

\*\*Note: The scales for the 0-23 month and the ≥65 year age groups differ from other age groups.

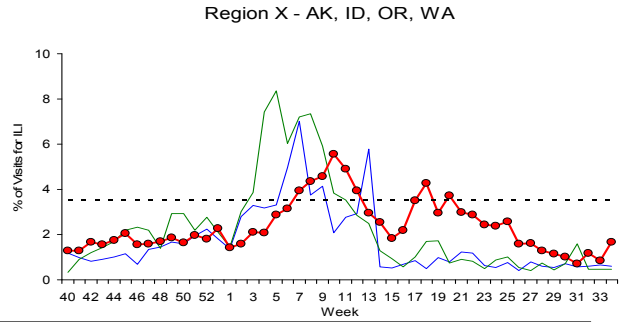
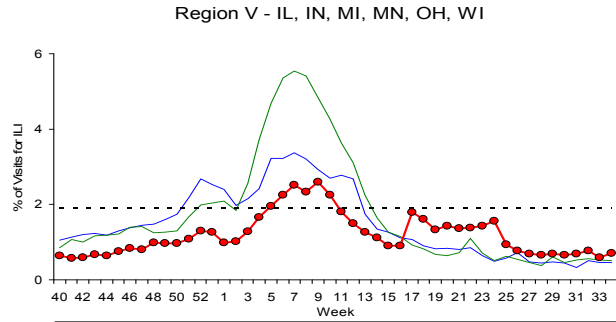
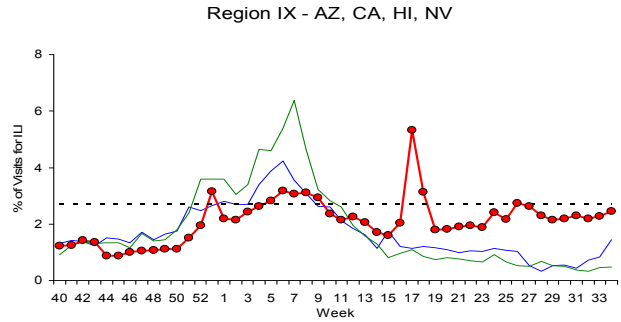
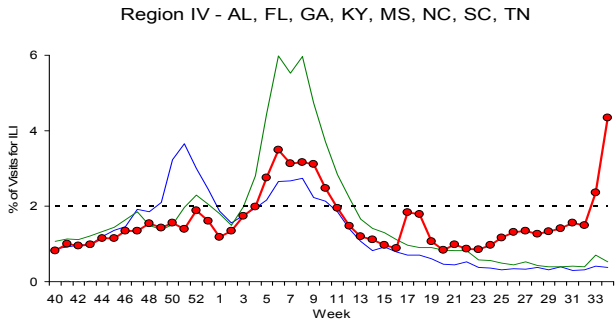
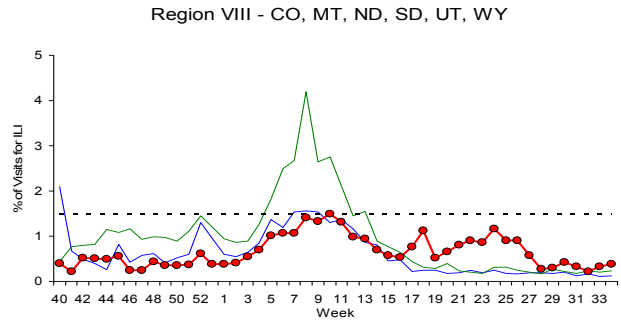
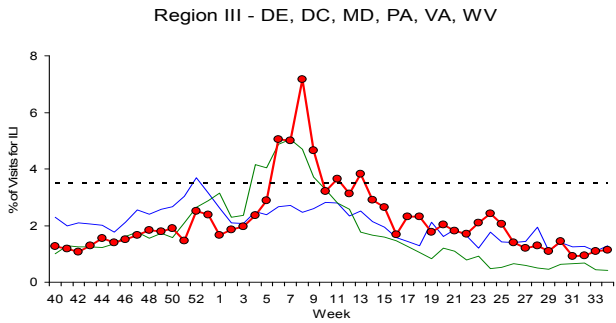
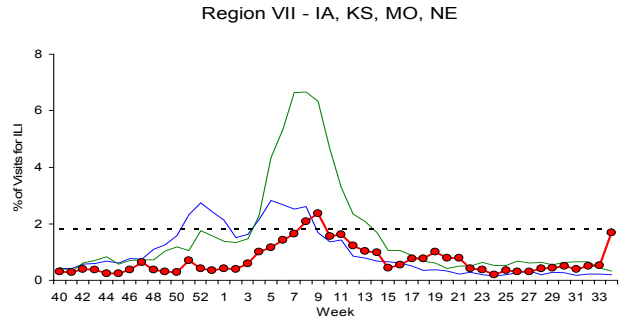
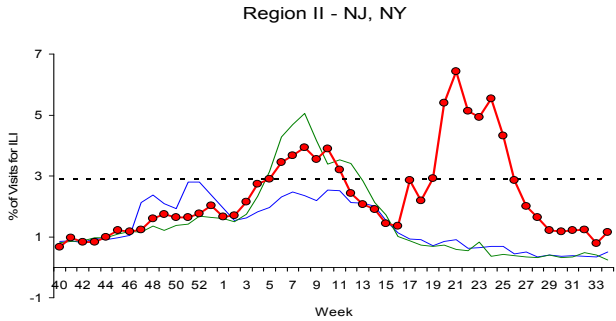
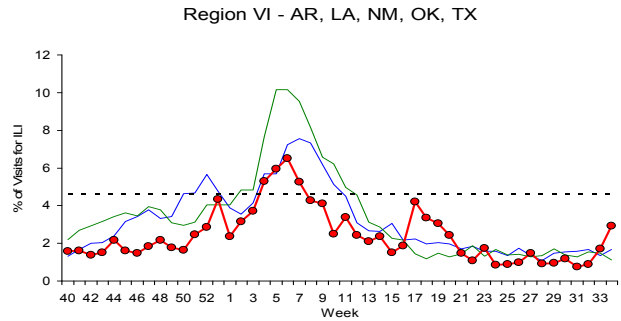
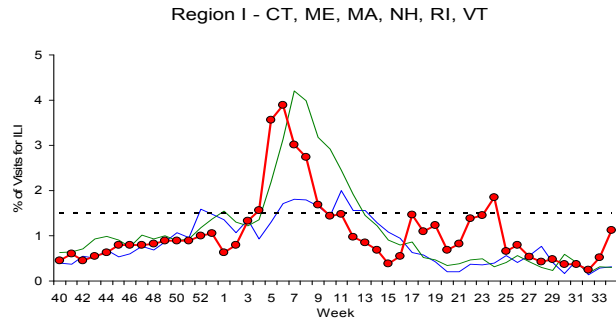
**Outpatient Illness Surveillance:** Nationwide during week 34, 2.1% of patient visits reported through the U.S. Outpatient Influenza-like Illness Surveillance Network (ILINet) were due to influenza-like illness (ILI). This percentage is below the national baseline of 2.4%.

Percentage of Visits for Influenza-like Illness (ILI) Reported by the U.S. Outpatient Influenza-like Illness Surveillance Network (ILINet), National Summary, 2008-09 and Previous Two Seasons



\*There was no week 53 during the 2006-07 and 2007-08 seasons, therefore the week 53 data point for those seasons is an average of weeks 52 and 1.

On a regional level, the percentage of outpatient visits for ILI ranged from 0.4% to 4.3%. One region (Region IV) reported 4.3% of outpatient visits for ILI, which is above its region-specific baseline of 2.0%, while the remaining nine regions reported percentages of visits for ILI below region-specific baseline levels.



NOTE: Scales differ between regions

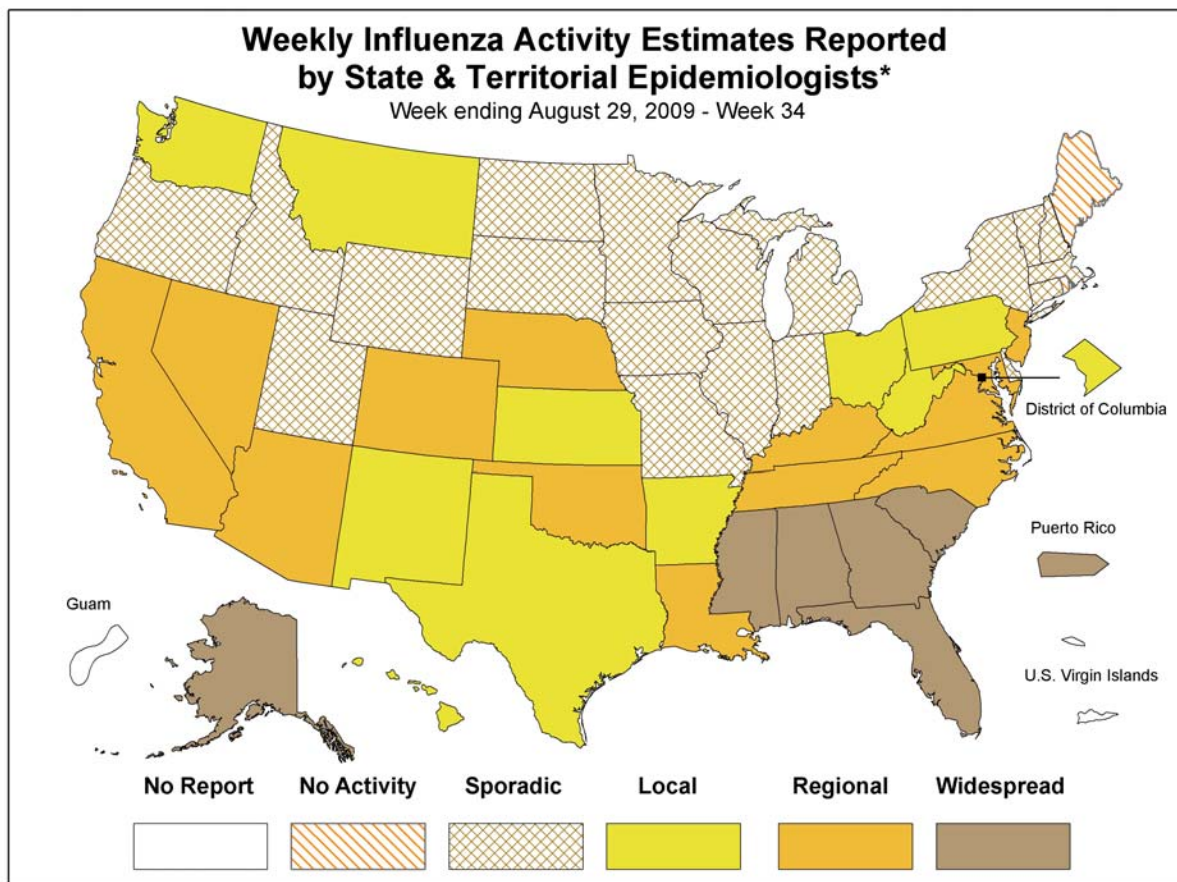
NOTE: There was no week 53 during the 2006-07 and 2007-08 seasons, therefore the week 53 data point for those seasons is an average of weeks 52 and 1.



**Geographic Spread of Influenza as Assessed by State and Territorial Epidemiologists:** The influenza activity reported by state and territorial epidemiologists indicates geographic spread of both seasonal influenza and 2009 influenza A (H1N1) viruses and does not measure the severity of influenza activity.

During week 34, the following influenza activity was reported:

- Widespread influenza activity was reported by Puerto Rico and six states (Alabama, Alaska, Florida, Georgia, Mississippi, and South Carolina).
- Regional influenza activity was reported by 13 states (Arizona, California, Colorado, Kentucky, Louisiana, Maryland, Nebraska, Nevada, New Jersey, North Carolina, Oklahoma, Tennessee, and Virginia).
- Local influenza activity was reported by the District of Columbia and 10 states (Arkansas, Hawaii, Kansas, Montana, New Mexico, Ohio, Pennsylvania, Texas, Washington, and West Virginia).
- Sporadic activity was reported by 19 states (Connecticut, Delaware, Idaho, Illinois, Indiana, Iowa, Massachusetts, Michigan, Minnesota, Missouri, New Hampshire, New York, North Dakota, Oregon, South Dakota, Utah, Vermont, Wisconsin, and Wyoming).
- No influenza activity was reported by two states (Maine and Rhode Island).
- Guam and the U.S. Virgin Islands did not report.



\* This map indicates geographic spread & does not measure the severity of influenza activity

A description of surveillance methods is available at: <http://www.cdc.gov/flu/weekly/fluactivity.htm>

Report prepared: September 4, 2009.

**WHO Collaborating Laboratory Reports**  
**2008-09 Influenza Season**  
**Update: Friday, September 04, 2009**  
**Summary for All Regions**

CDC Week	No. of Reporting Laboratories	No. of Specimens Tested	No. (%) of Specimens Positive for Influenza	Postivite specimens by Type/Subtype					
				A(H1)	A(H3)	AH1SWINE	AUNSUB	A-Unk	B
200840	119	2612	17 ( 0.65 )	3	0	0	0	8	6
200841	118	2666	23 ( 0.86 )	5	4	0	0	8	6
200842	122	2798	37 ( 1.32 )	13	3	0	0	15	6
200843	124	3261	60 ( 1.84 )	22	0	0	0	24	14
200844	124	3392	43 ( 1.27 )	13	3	0	0	21	6
200845	125	3989	69 ( 1.73 )	33	2	0	0	23	11
200846	127	4217	62 ( 1.47 )	25	2	0	0	23	12
200847	129	4608	81 ( 1.76 )	25	1	0	0	30	25
200848	126	4726	108 ( 2.29 )	40	1	0	0	47	20
200849	126	5448	125 ( 2.29 )	44	6	0	0	58	17
200850	128	5887	186 ( 3.16 )	70	9	0	0	66	41
200851	128	6156	263 ( 4.27 )	76	19	0	0	109	59
200852	130	5923	278 ( 4.69 )	69	12	0	0	154	43
200853	125	6405	357 ( 5.57 )	116	19	0	0	175	47
200901	126	6805	560 ( 8.23 )	166	27	0	0	289	78
200902	127	6948	749 ( 10.78 )	198	22	0	0	425	104
200903	126	7766	1216 ( 15.66 )	355	45	0	0	629	187
200904	129	9153	1901 ( 20.77 )	558	78	0	0	898	367
200905	129	11595	2767 ( 23.86 )	673	52	0	0	1369	673
200906	130	12813	3198 ( 24.96 )	827	66	0	0	1375	930
200907	129	11732	2909 ( 24.80 )	843	69	0	1	1080	916
200908	129	11935	2899 ( 24.29 )	693	58	0	0	1016	1132
200909	128	10689	2613 ( 24.45 )	539	68	0	0	889	1117
200910	124	9438	2123 ( 22.49 )	382	68	0	0	643	1030
200911	123	8420	1737 ( 20.63 )	356	63	0	0	429	889
200912	127	7175	1206 ( 16.81 )	263	44	0	0	285	614
200913	124	5653	772 ( 13.66 )	118	27	0	0	171	456
200914	122	4986	532 ( 10.67 )	98	37	0	1	128	268
200915	118	4438	315 ( 7.10 )	38	29	0	1	76	171
200916	119	3935	277 ( 7.04 )	44	33	12	3	80	105
200917	130	33002	4031 ( 12.21 )	654	780	1275	203	417	702
200918	125	30736	4526 ( 14.73 )	474	582	2330	135	567	438
200919	125	14969	2705 ( 18.07 )	139	231	1680	91	439	125
200920	123	14040	3666 ( 26.11 )	69	239	2547	86	641	84
200921	125	11875	3762 ( 31.68 )	32	236	2742	45	669	38
200922	123	11999	4594 ( 38.29 )	25	410	3540	18	577	24
200923	121	11991	4927 ( 41.09 )	29	251	3813	18	802	14
200924	122	12770	5536 ( 43.35 )	15	211	4216	24	1061	9
200925	120	10874	3886 ( 35.74 )	9	69	2991	33	777	7
200926	124	9079	2785 ( 30.68 )	12	37	2113	26	592	5
200927	118	9066	2943 ( 32.46 )	2	33	2364	13	526	5
200928	120	8221	2312 ( 28.12 )	3	23	1849	17	417	3
200929	114	6996	1906 ( 27.24 )	4	14	1578	24	283	3
200930	112	7200	1959 ( 27.21 )	3	11	1598	22	324	1
200931	104	6483	1508 ( 23.26 )	10	6	1052	19	418	3

**WHO Collaborating Laboratory Reports**  
**2008-09 Influenza Season**  
**Update: Friday, September 04, 2009**  
**Summary for All Regions**

<b>CDC Week</b>	<b>No. of Reporting Laboratories</b>	<b>No. of Specimens Tested</b>	<b>No. (%) of Specimens Positive for Influenza</b>	<b>Postivite specimens by Type/Subtype</b>					
				<b>A(H1)</b>	<b>A(H3)</b>	<b>AH1SWINE</b>	<b>AUNSUB</b>	<b>A-Unk</b>	<b>B</b>
200932	98	6027	1158 ( 19.21 )	14	5	869	12	253	5
200933	93	6473	1201 ( 18.55 )	2	10	788	20	380	1
200934	73	6410	1109 ( 17.30 )	10	11	755	18	311	4
<b>Totals</b>	5831	413780	81997 ( 19.82 )	8211	4026	38112	830	19997	10821

**WHO Collaborating Laboratory Reports  
2008-2009 Influenza Season  
Update: Friday, September 04, 2009  
Summary by Region**

**HHS Region 1 (CT, ME, MA, NH, RI, VT)**

CDC Week	No. of Reporting Laboratories	No. of Specimens Tested	No. (%) of Specimens Positive for Influenza	Positive specimens by Type / Subtype					
				A(H1)	AH3	AH1SWINE	AUNSUB	AUNK	B
200840	7	160	0 ( 0.00 )	0	0	0	0	0	0
200841	7	167	0 ( 0.00 )	0	0	0	0	0	0
200842	8	178	0 ( 0.00 )	0	0	0	0	0	0
200843	8	202	0 ( 0.00 )	0	0	0	0	0	0
200844	9	228	1 ( 0.44 )	0	1	0	0	0	0
200845	8	250	1 ( 0.40 )	0	0	0	0	0	1
200846	8	249	0 ( 0.00 )	0	0	0	0	0	0
200847	9	314	0 ( 0.00 )	0	0	0	0	0	0
200848	8	319	5 ( 1.57 )	0	0	0	0	4	1
200849	9	364	0 ( 0.00 )	0	0	0	0	0	0
200850	8	436	7 ( 1.61 )	2	2	0	0	2	1
200851	9	489	6 ( 1.23 )	2	1	0	0	1	2
200852	10	440	11 ( 2.50 )	4	0	0	0	7	0
200853	10	492	13 ( 2.64 )	3	1	0	0	8	1
200901	10	567	20 ( 3.53 )	7	2	0	0	8	3
200902	10	551	45 ( 8.17 )	11	0	0	0	32	2
200903	9	658	77 ( 11.70 )	16	5	0	0	45	11
200904	10	867	159 ( 18.34 )	43	4	0	0	92	20
200905	10	1073	243 ( 22.65 )	52	2	0	0	155	34
200906	10	1505	456 ( 30.30 )	108	18	0	0	205	125
200907	10	1469	418 ( 28.45 )	83	18	0	0	188	129
200908	10	1417	275 ( 19.41 )	65	7	0	0	108	95
200909	9	958	199 ( 20.77 )	29	3	0	0	81	86
200910	10	925	181 ( 19.57 )	30	5	0	0	62	84
200911	10	710	105 ( 14.79 )	13	6	0	0	25	61
200912	9	685	79 ( 11.53 )	12	2	0	0	20	45
200913	10	604	62 ( 10.26 )	9	0	0	0	11	42
200914	10	545	67 ( 12.29 )	18	6	0	0	9	34
200915	8	390	16 ( 4.10 )	5	0	0	0	3	8
200916	9	346	21 ( 6.07 )	3	1	1	0	5	11
200917	9	2083	215 ( 10.32 )	38	65	83	3	10	16
200918	10	2127	188 ( 8.84 )	21	50	103	9	1	4
200919	10	1090	151 ( 13.85 )	5	27	111	0	5	3
200920	10	1339	437 ( 32.64 )	2	37	391	0	7	0
200921	10	1396	542 ( 38.83 )	1	24	497	0	19	1
200922	10	1635	744 ( 45.50 )	0	13	664	0	67	0
200923	10	1287	490 ( 38.07 )	0	2	356	1	131	0
200924	10	1111	360 ( 32.40 )	1	1	184	0	174	0
200925	10	918	266 ( 28.98 )	0	1	153	0	112	0
200926	10	673	174 ( 25.85 )	0	1	124	0	49	0

**WHO Collaborating Laboratory Reports  
2008-2009 Influenza Season  
Update: Friday, September 04, 2009  
Summary by Region**

**HHS Region 1 (CT, ME, MA, NH, RI, VT)**

CDC Week	No. of Reporting Laboratories	No. of Specimens Tested	No. (%) of Specimens Positive for Influenza	Positive specimens by Type / Subtype					
				A(H1)	AH3	AH1SWINE	AUNSUB	AUNK	B
200927	10	613	133 ( 21.70 )	0	0	108	0	25	0
200928	10	547	76 ( 13.89 )	0	0	64	0	12	0
200929	10	386	31 ( 8.03 )	0	0	27	0	4	0
200930	10	274	16 ( 5.84 )	0	0	11	0	5	0
200931	9	285	12 ( 4.21 )	0	0	10	0	2	0
200932	8	303	40 ( 13.20 )	0	0	33	0	7	0
200933	6	214	16 ( 7.48 )	0	0	13	0	3	0
200934	5	210	4 ( 1.90 )	2	0	0	0	2	0
<b>Totals</b>	<b>439</b>	<b>34049</b>	<b>6362 ( 18.68 )</b>	<b>585</b>	<b>305</b>	<b>2933</b>	<b>13</b>	<b>1706</b>	<b>820</b>

**HHS Region 2 (NJ, NY)**

CDC Week	No. of Reporting Laboratories	No. of Specimens Tested	No. (%) of Specimens Positive for Influenza	Positive specimens by Type / Subtype					
				A(H1)	AH3	AH1SWINE	AUNSUB	AUNK	B
200840	12	432	0 ( 0.00 )	0	0	0	0	0	0
200841	11	342	1 ( 0.29 )	0	0	0	0	1	0
200842	12	380	0 ( 0.00 )	0	0	0	0	0	0
200843	12	414	1 ( 0.24 )	0	0	0	0	0	1
200844	13	444	1 ( 0.23 )	0	0	0	0	1	0
200845	13	586	0 ( 0.00 )	0	0	0	0	0	0
200846	13	485	1 ( 0.21 )	0	0	0	0	1	0
200847	13	559	0 ( 0.00 )	0	0	0	0	0	0
200848	13	632	4 ( 0.63 )	0	0	0	0	1	3
200849	13	716	3 ( 0.42 )	0	0	0	0	2	1
200850	13	866	15 ( 1.73 )	9	0	0	0	3	3
200851	13	936	17 ( 1.82 )	4	1	0	0	10	2
200852	12	845	21 ( 2.49 )	0	0	0	0	19	2
200853	12	977	34 ( 3.48 )	4	1	0	0	27	2
200901	12	927	59 ( 6.36 )	12	1	0	0	44	2
200902	13	940	83 ( 8.83 )	7	2	0	0	67	7
200903	13	1097	129 ( 11.76 )	34	5	0	0	69	21
200904	13	1185	190 ( 16.03 )	29	1	0	0	119	41
200905	13	1583	279 ( 17.62 )	33	7	0	0	165	74
200906	13	1554	159 ( 10.23 )	19	1	0	0	84	55
200907	12	925	162 ( 17.51 )	31	4	0	0	73	54
200908	12	928	175 ( 18.86 )	32	5	0	0	58	80
200909	11	774	135 ( 17.44 )	15	2	0	0	50	68
200910	10	632	118 ( 18.67 )	8	3	0	0	43	64
200911	11	631	110 ( 17.43 )	9	8	0	0	37	56
200912	11	637	99 ( 15.54 )	3	1	0	0	46	49

**WHO Collaborating Laboratory Reports  
2008-2009 Influenza Season  
Update: Friday, September 04, 2009  
Summary by Region**

**HHS Region 2 (NJ, NY)**

CDC Week	No. of Reporting Laboratories	No. of Specimens Tested	No. (%) of Specimens Positive for Influenza	Positive specimens by Type / Subtype					
				A(H1)	AH3	AH1SWINE	AUNSUB	AUNK	B
200913	12	596	70 ( 11.74 )	5	2	0	0	25	38
200914	11	478	49 ( 10.25 )	1	5	0	0	21	22
200915	11	430	36 ( 8.37 )	0	2	0	0	17	17
200916	10	262	11 ( 4.20 )	0	1	4	3	1	2
200917	10	1068	218 ( 20.41 )	17	45	83	1	42	30
200918	11	669	149 ( 22.27 )	4	34	83	1	12	15
200919	10	578	92 ( 15.92 )	2	19	38	9	23	1
200920	9	770	226 ( 29.35 )	0	16	90	2	114	4
200921	10	929	282 ( 30.36 )	2	21	123	0	136	0
200922	9	878	374 ( 42.60 )	0	17	225	0	132	0
200923	10	1051	507 ( 48.24 )	2	15	280	4	206	0
200924	10	1462	670 ( 45.83 )	5	3	332	0	330	0
200925	9	1281	536 ( 41.84 )	7	4	293	0	232	0
200926	10	798	214 ( 26.82 )	1	0	123	0	90	0
200927	9	562	125 ( 22.24 )	0	0	82	0	43	0
200928	10	443	50 ( 11.29 )	0	2	26	0	22	0
200929	10	327	35 ( 10.70 )	1	0	22	1	11	0
200930	8	273	15 ( 5.49 )	0	0	11	0	4	0
200931	8	218	11 ( 5.05 )	0	0	6	0	5	0
200932	8	197	5 ( 2.54 )	1	0	1	0	3	0
200933	7	164	6 ( 3.66 )	0	0	5	0	1	0
200934	8	192	5 ( 2.60 )	0	0	4	0	1	0
<b>Totals</b>	<b>529</b>	<b>34053</b>	<b>5482 ( 16.10 )</b>	<b>297</b>	<b>228</b>	<b>1831</b>	<b>21</b>	<b>2391</b>	<b>714</b>

**HHS Region 3 (DE, DC, MD, PA, VA, WV)**

CDC Week	No. of Reporting Laboratories	No. of Specimens Tested	No. (%) of Specimens Positive for Influenza	Positive specimens by Type / Subtype					
				A(H1)	AH3	AH1SWINE	AUNSUB	AUNK	B
200840	11	239	0 ( 0.00 )	0	0	0	0	0	0
200841	10	233	1 ( 0.43 )	0	0	0	0	0	1
200842	10	232	0 ( 0.00 )	0	0	0	0	0	0
200843	10	272	2 ( 0.74 )	1	0	0	0	0	1
200844	10	315	4 ( 1.27 )	1	0	0	0	1	2
200845	11	342	1 ( 0.29 )	1	0	0	0	0	0
200846	11	415	1 ( 0.24 )	1	0	0	0	0	0
200847	10	396	2 ( 0.51 )	0	0	0	0	0	2
200848	11	347	1 ( 0.29 )	0	0	0	0	1	0
200849	10	476	2 ( 0.42 )	1	1	0	0	0	0
200850	11	426	9 ( 2.11 )	8	0	0	0	1	0
200851	11	463	20 ( 4.32 )	10	3	0	0	4	3

**WHO Collaborating Laboratory Reports  
2008-2009 Influenza Season  
Update: Friday, September 04, 2009  
Summary by Region**

**HHS Region 3 (DE, DC, MD, PA, VA, WV)**

CDC Week	No. of Reporting Laboratories	No. of Specimens Tested	No. (%) of Specimens Positive for Influenza	Positive specimens by Type / Subtype					
				A(H1)	AH3	AH1SWINE	AUNSUB	AUNK	B
200852	11	481	15 ( 3.12 )	7	0	0	0	5	3
200853	10	518	12 ( 2.32 )	2	1	0	0	7	2
200901	10	572	45 ( 7.87 )	25	7	0	0	6	7
200902	11	618	56 ( 9.06 )	33	3	0	0	15	5
200903	11	610	76 ( 12.46 )	40	7	0	0	13	16
200904	11	724	145 ( 20.03 )	75	5	0	0	29	36
200905	11	823	202 ( 24.54 )	87	3	0	0	39	73
200906	11	1012	333 ( 32.91 )	171	4	0	0	68	90
200907	11	1034	375 ( 36.27 )	168	12	0	0	70	125
200908	11	1081	389 ( 35.99 )	138	2	0	0	92	157
200909	11	1013	381 ( 37.61 )	115	15	0	0	87	164
200910	11	905	322 ( 35.58 )	74	4	0	0	68	176
200911	11	891	323 ( 36.25 )	81	6	0	0	50	186
200912	11	728	171 ( 23.49 )	37	2	0	0	29	103
200913	11	576	133 ( 23.09 )	34	4	0	0	10	85
200914	11	461	68 ( 14.75 )	18	4	0	0	11	35
200915	10	375	20 ( 5.33 )	5	0	0	0	5	10
200916	11	359	29 ( 8.08 )	7	1	1	0	2	18
200917	11	1592	185 ( 11.62 )	64	36	48	1	3	33
200918	11	1588	126 ( 7.93 )	14	34	55	0	4	19
200919	12	938	116 ( 12.37 )	8	20	79	0	2	7
200920	11	1027	160 ( 15.58 )	5	17	131	0	6	1
200921	11	982	232 ( 23.63 )	0	14	208	0	10	0
200922	11	1205	416 ( 34.52 )	7	6	392	0	10	1
200923	11	1657	687 ( 41.46 )	12	5	614	0	56	0
200924	11	1831	1160 ( 63.35 )	0	0	1055	0	105	0
200925	11	1360	546 ( 40.15 )	0	2	472	7	64	1
200926	10	1102	419 ( 38.02 )	1	2	370	4	41	1
200927	10	965	299 ( 30.98 )	0	0	264	2	33	0
200928	10	745	178 ( 23.89 )	0	0	136	3	39	0
200929	10	668	108 ( 16.17 )	0	0	99	0	9	0
200930	10	636	148 ( 23.27 )	0	0	128	2	18	0
200931	9	543	114 ( 20.99 )	0	0	102	1	11	0
200932	9	528	93 ( 17.61 )	0	0	83	0	10	0
200933	9	533	99 ( 18.57 )	0	0	90	0	9	0
200934	7	499	53 ( 10.62 )	0	0	51	0	2	0
<b>Totals</b>	<b>505</b>	<b>35336</b>	<b>8277 ( 23.42 )</b>	<b>1251</b>	<b>220</b>	<b>4378</b>	<b>20</b>	<b>1045</b>	<b>1363</b>

**WHO Collaborating Laboratory Reports  
2008-2009 Influenza Season  
Update: Friday, September 04, 2009  
Summary by Region**

**HHS Region 4 (AL, FL, GA, KY, MS, NC, SC, TN)**

CDC Week	No. of Reporting Laboratories	No. of Specimens Tested	No. (%) of Specimens Positive for Influenza	Positive specimens by Type / Subtype					
				A(H1)	AH3	AH1SWINE	AUNSUB	AUNK	B
200840	24	444	4 ( 0.90 )	0	0	0	0	2	2
200841	24	473	0 ( 0.00 )	0	0	0	0	0	0
200842	25	545	8 ( 1.47 )	0	0	0	0	7	1
200843	26	649	8 ( 1.23 )	0	0	0	0	6	2
200844	26	681	10 ( 1.47 )	1	0	0	0	6	3
200845	25	716	9 ( 1.26 )	1	0	0	0	7	1
200846	26	770	13 ( 1.69 )	2	0	0	0	6	5
200847	26	755	20 ( 2.65 )	0	0	0	0	10	10
200848	25	714	14 ( 1.96 )	0	0	0	0	6	8
200849	26	848	25 ( 2.95 )	2	0	0	0	14	9
200850	24	854	22 ( 2.58 )	1	0	0	0	9	12
200851	25	839	38 ( 4.53 )	7	0	0	0	14	17
200852	26	830	28 ( 3.37 )	3	0	0	0	11	14
200853	26	768	30 ( 3.91 )	3	1	0	0	18	8
200901	24	863	58 ( 6.72 )	9	0	0	0	30	19
200902	24	837	70 ( 8.36 )	8	3	0	0	41	18
200903	25	878	95 ( 10.82 )	27	3	0	0	45	20
200904	25	1003	141 ( 14.06 )	36	4	0	0	64	37
200905	25	1280	241 ( 18.83 )	70	9	0	0	108	54
200906	25	1687	362 ( 21.46 )	91	6	0	0	173	92
200907	25	1660	379 ( 22.83 )	99	7	0	0	182	91
200908	25	1932	434 ( 22.46 )	96	4	0	0	211	123
200909	24	1700	341 ( 20.06 )	48	2	0	0	173	118
200910	24	1602	282 ( 17.60 )	40	4	0	0	121	117
200911	25	1395	290 ( 20.79 )	78	1	0	0	95	116
200912	25	1210	205 ( 16.94 )	62	4	0	0	53	86
200913	23	866	83 ( 9.58 )	10	0	0	0	38	35
200914	25	758	73 ( 9.63 )	11	0	0	0	30	32
200915	24	645	44 ( 6.82 )	5	1	0	0	19	19
200916	24	556	28 ( 5.04 )	0	0	0	0	22	6
200917	24	3906	379 ( 9.70 )	55	53	36	33	99	103
200918	24	4158	458 ( 11.01 )	84	51	121	10	136	56
200919	25	2509	345 ( 13.75 )	30	76	126	4	95	14
200920	25	1782	242 ( 13.58 )	16	90	107	1	14	14
200921	25	1448	260 ( 17.96 )	6	18	167	1	59	9
200922	24	1284	256 ( 19.94 )	5	25	165	2	52	7
200923	24	1481	487 ( 32.88 )	1	18	344	3	118	3
200924	23	1854	710 ( 38.30 )	1	23	514	2	169	1
200925	23	1786	818 ( 45.80 )	1	24	638	2	152	1
200926	23	1633	593 ( 36.31 )	1	2	421	3	164	2

**WHO Collaborating Laboratory Reports  
2008-2009 Influenza Season  
Update: Friday, September 04, 2009  
Summary by Region**

**HHS Region 4 (AL, FL, GA, KY, MS, NC, SC, TN)**

CDC Week	No. of Reporting Laboratories	No. of Specimens Tested	No. (%) of Specimens Positive for Influenza	Positive specimens by Type / Subtype					
				A(H1)	AH3	AH1SWINE	AUNSUB	AUNK	B
200927	23	1708	637 ( 37.30 )	0	3	458	1	173	2
200928	23	1562	507 ( 32.46 )	0	4	361	2	138	2
200929	21	1279	402 ( 31.43 )	0	2	288	1	109	2
200930	20	1387	369 ( 26.60 )	0	2	248	1	117	1
200931	17	1155	309 ( 26.75 )	0	1	238	6	64	0
200932	16	1311	302 ( 23.04 )	0	0	213	4	81	4
200933	15	1581	329 ( 20.81 )	0	2	223	1	103	0
200934	12	2067	358 ( 17.32 )	0	1	182	7	166	2
<b>Totals</b>	1133	62649	11116 ( 17.74 )	910	444	4850	84	3530	1298

**HHS Region 5 (IL, IN, MI, MN, OH, WI)**

CDC Week	No. of Reporting Laboratories	No. of Specimens Tested	No. (%) of Specimens Positive for Influenza	Positive specimens by Type / Subtype					
				A(H1)	AH3	AH1SWINE	AUNSUB	AUNK	B
200840	11	142	0 ( 0.00 )	0	0	0	0	0	0
200841	11	171	2 ( 1.17 )	1	0	0	0	0	1
200842	13	189	0 ( 0.00 )	0	0	0	0	0	0
200843	15	242	10 ( 4.13 )	2	0	0	0	4	4
200844	15	240	0 ( 0.00 )	0	0	0	0	0	0
200845	15	278	6 ( 2.16 )	2	0	0	0	1	3
200846	15	209	0 ( 0.00 )	0	0	0	0	0	0
200847	16	305	4 ( 1.31 )	1	0	0	0	1	2
200848	15	275	2 ( 0.73 )	2	0	0	0	0	0
200849	16	366	10 ( 2.73 )	8	2	0	0	0	0
200850	18	373	9 ( 2.41 )	6	2	0	0	1	0
200851	15	364	20 ( 5.49 )	10	6	0	0	1	3
200852	16	366	31 ( 8.47 )	17	4	0	0	7	3
200853	14	411	47 ( 11.44 )	36	3	0	0	5	3
200901	15	457	65 ( 14.22 )	38	7	0	0	10	10
200902	15	504	84 ( 16.67 )	53	3	0	0	17	11
200903	15	574	129 ( 22.47 )	91	4	0	0	21	13
200904	16	645	191 ( 29.61 )	119	10	0	0	32	30
200905	15	782	259 ( 33.12 )	160	3	0	0	37	59
200906	16	761	282 ( 37.06 )	172	5	0	0	19	86
200907	17	828	329 ( 39.73 )	167	5	0	0	51	106
200908	16	976	374 ( 38.32 )	159	4	0	0	47	164
200909	18	988	410 ( 41.50 )	145	6	0	0	53	206
200910	16	925	371 ( 40.11 )	113	5	0	0	70	183
200911	14	718	213 ( 29.67 )	49	0	0	0	43	121
200912	15	632	167 ( 26.42 )	45	0	0	0	24	98

**WHO Collaborating Laboratory Reports  
2008-2009 Influenza Season  
Update: Friday, September 04, 2009  
Summary by Region**

**HHS Region 5 (IL, IN, MI, MN, OH, WI)**

CDC Week	No. of Reporting Laboratories	No. of Specimens Tested	No. (%) of Specimens Positive for Influenza	Positive specimens by Type / Subtype					
				A(H1)	AH3	AH1SWINE	AUNSUB	AUNK	B
200913	16	550	116 ( 21.09 )	21	1	0	0	13	81
200914	13	464	76 ( 16.38 )	16	0	0	1	9	50
200915	14	377	41 ( 10.88 )	7	1	0	1	1	31
200916	14	355	22 ( 6.20 )	5	1	3	0	0	13
200917	16	4538	733 ( 16.15 )	128	59	359	76	32	79
200918	15	4396	832 ( 18.93 )	36	26	662	34	43	31
200919	17	2938	595 ( 20.25 )	22	8	534	0	17	14
200920	17	2884	1010 ( 35.02 )	9	8	956	12	15	10
200921	15	2091	975 ( 46.63 )	5	5	927	10	27	1
200922	17	2405	1170 ( 48.65 )	1	4	1109	10	44	2
200923	17	2664	1426 ( 53.53 )	0	7	1333	8	78	0
200924	16	2500	1214 ( 48.56 )	5	5	1111	10	81	2
200925	16	1618	552 ( 34.12 )	0	5	502	8	37	0
200926	17	1033	270 ( 26.14 )	0	2	246	12	10	0
200927	16	808	178 ( 22.03 )	0	2	170	1	5	0
200928	16	737	120 ( 16.28 )	1	0	115	1	3	0
200929	14	629	83 ( 13.20 )	0	2	76	3	2	0
200930	16	635	79 ( 12.44 )	1	1	66	5	6	0
200931	12	462	81 ( 17.53 )	7	0	67	3	3	1
200932	12	471	65 ( 13.80 )	1	2	52	3	6	1
200933	13	411	44 ( 10.71 )	0	2	37	1	4	0
200934	11	411	46 ( 11.19 )	0	2	40	0	4	0
<b>Totals</b>	<b>723</b>	<b>46098</b>	<b>12743 ( 27.64 )</b>	<b>1661</b>	<b>212</b>	<b>8365</b>	<b>199</b>	<b>884</b>	<b>1422</b>

**HHS Region 6 (AR, LA, NM, OK, TX)**

CDC Week	No. of Reporting Laboratories	No. of Specimens Tested	No. (%) of Specimens Positive for Influenza	Positive specimens by Type / Subtype					
				A(H1)	AH3	AH1SWINE	AUNSUB	AUNK	B
200840	16	360	3 ( 0.83 )	0	0	0	0	3	0
200841	16	417	4 ( 0.96 )	0	0	0	0	4	0
200842	15	368	6 ( 1.63 )	0	0	0	0	3	3
200843	14	417	9 ( 2.16 )	0	0	0	0	4	5
200844	14	488	8 ( 1.64 )	2	0	0	0	6	0
200845	13	618	11 ( 1.78 )	5	0	0	0	2	4
200846	15	783	20 ( 2.55 )	6	0	0	0	8	6
200847	15	946	25 ( 2.64 )	7	0	0	0	9	9
200848	15	1055	34 ( 3.22 )	5	0	0	0	23	6
200849	15	1182	41 ( 3.47 )	8	0	0	0	28	5
200850	15	1307	73 ( 5.59 )	12	0	0	0	37	24
200851	15	1361	111 ( 8.16 )	17	0	0	0	66	28

**WHO Collaborating Laboratory Reports  
2008-2009 Influenza Season  
Update: Friday, September 04, 2009  
Summary by Region**

**HHS Region 6 (AR, LA, NM, OK, TX)**

CDC Week	No. of Reporting Laboratories	No. of Specimens Tested	No. (%) of Specimens Positive for Influenza	Positive specimens by Type / Subtype					
				A(H1)	AH3	AH1SWINE	AUNSUB	AUNK	B
200852	15	1377	126 ( 9.15 )	14	1	0	0	91	20
200853	14	1526	129 ( 8.45 )	21	1	0	0	80	27
200901	15	1623	188 ( 11.58 )	30	1	0	0	126	31
200902	15	1600	270 ( 16.88 )	35	0	0	0	184	51
200903	15	2010	498 ( 24.78 )	68	7	0	0	336	87
200904	14	2347	736 ( 31.36 )	100	20	0	0	453	163
200905	15	3618	1156 ( 31.95 )	115	10	0	0	712	319
200906	15	3597	1080 ( 30.03 )	86	2	0	0	608	384
200907	14	2827	671 ( 23.74 )	54	1	0	0	327	289
200908	15	2654	585 ( 22.04 )	44	6	0	0	226	309
200909	14	2263	445 ( 19.66 )	38	3	0	0	182	222
200910	14	1682	312 ( 18.55 )	17	6	0	0	94	195
200911	14	1373	160 ( 11.65 )	11	2	0	0	53	94
200912	15	1052	84 ( 7.98 )	5	2	0	0	34	43
200913	14	770	44 ( 5.71 )	1	0	0	0	12	31
200914	14	623	25 ( 4.01 )	1	0	0	0	17	7
200915	14	667	10 ( 1.50 )	1	0	0	0	5	4
200916	14	563	23 ( 4.09 )	0	2	2	0	13	6
200917	14	10848	765 ( 7.05 )	59	143	364	5	87	107
200918	15	8784	731 ( 8.32 )	43	48	428	0	97	115
200919	14	2715	397 ( 14.62 )	11	12	288	0	43	43
200920	13	1913	392 ( 20.49 )	5	8	326	0	31	22
200921	15	1321	268 ( 20.29 )	6	3	206	0	50	3
200922	14	963	287 ( 29.80 )	0	1	260	0	24	2
200923	14	846	266 ( 31.44 )	0	1	241	0	23	1
200924	14	718	242 ( 33.70 )	1	5	195	0	41	0
200925	14	777	231 ( 29.73 )	0	2	176	0	52	1
200926	15	595	136 ( 22.86 )	0	3	66	0	67	0
200927	14	818	230 ( 28.12 )	0	3	159	1	67	0
200928	14	689	196 ( 28.45 )	0	2	132	0	62	0
200929	13	660	199 ( 30.15 )	0	2	152	1	44	0
200930	12	846	275 ( 32.51 )	0	4	198	0	73	0
200931	13	1162	262 ( 22.55 )	0	1	106	0	155	0
200932	12	898	222 ( 24.72 )	2	2	140	0	78	0
200933	11	1327	301 ( 22.68 )	0	3	93	0	205	0
200934	7	861	237 ( 27.53 )	0	2	166	0	68	1
<b>Totals</b>	<b>676</b>	<b>78215</b>	<b>12524 ( 16.01 )</b>	<b>830</b>	<b>309</b>	<b>3698</b>	<b>7</b>	<b>5013</b>	<b>2667</b>

**WHO Collaborating Laboratory Reports  
2008-2009 Influenza Season  
Update: Friday, September 04, 2009  
Summary by Region**

**HHS Region 7 (IA, KS, MO, NE)**

CDC Week	No. of Reporting Laboratories	No. of Specimens Tested	No. (%) of Specimens Positive for Influenza	Positive specimens by Type / Subtype					
				A(H1)	AH3	AH1SWINE	AUNSUB	AUNK	B
200840	8	203	0 ( 0.00 )	0	0	0	0	0	0
200841	8	212	0 ( 0.00 )	0	0	0	0	0	0
200842	8	240	0 ( 0.00 )	0	0	0	0	0	0
200843	8	229	0 ( 0.00 )	0	0	0	0	0	0
200844	8	280	0 ( 0.00 )	0	0	0	0	0	0
200845	9	337	0 ( 0.00 )	0	0	0	0	0	0
200846	9	369	0 ( 0.00 )	0	0	0	0	0	0
200847	9	391	0 ( 0.00 )	0	0	0	0	0	0
200848	10	390	0 ( 0.00 )	0	0	0	0	0	0
200849	9	483	2 ( 0.41 )	2	0	0	0	0	0
200850	8	470	3 ( 0.64 )	2	0	0	0	1	0
200851	8	526	5 ( 0.95 )	0	1	0	0	4	0
200852	8	442	5 ( 1.13 )	0	2	0	0	2	1
200853	9	479	10 ( 2.09 )	2	4	0	0	3	1
200901	8	528	9 ( 1.70 )	5	0	0	0	1	3
200902	8	534	19 ( 3.56 )	9	3	0	0	5	2
200903	8	564	29 ( 5.14 )	13	1	0	0	13	2
200904	8	667	79 ( 11.84 )	43	5	0	0	16	15
200905	8	653	112 ( 17.15 )	54	3	0	0	33	22
200906	8	736	146 ( 19.84 )	68	6	0	0	39	33
200907	8	777	161 ( 20.72 )	81	0	0	1	32	47
200908	8	666	160 ( 24.02 )	34	0	0	0	78	48
200909	9	709	156 ( 22.00 )	18	1	0	0	73	64
200910	8	631	115 ( 18.23 )	12	0	0	0	43	60
200911	8	574	116 ( 20.21 )	20	1	0	0	29	66
200912	9	500	66 ( 13.20 )	11	0	0	0	13	42
200913	8	410	50 ( 12.20 )	6	3	0	0	14	27
200914	8	368	22 ( 5.98 )	3	3	0	0	5	11
200915	8	344	29 ( 8.43 )	2	0	0	0	4	23
200916	8	356	14 ( 3.93 )	4	0	0	0	4	6
200917	11	1480	152 ( 10.27 )	58	9	26	25	8	26
200918	9	1640	184 ( 11.22 )	52	12	70	14	10	26
200919	8	658	73 ( 11.09 )	18	4	38	4	5	4
200920	8	952	95 ( 9.98 )	7	12	50	15	9	2
200921	9	585	58 ( 9.91 )	0	3	37	17	1	0
200922	9	550	47 ( 8.55 )	0	3	36	0	6	2
200923	8	419	35 ( 8.35 )	3	2	26	0	4	0
200924	8	391	53 ( 13.55 )	0	0	44	2	6	1
200925	7	403	94 ( 23.33 )	0	1	84	2	6	1
200926	9	395	110 ( 27.85 )	0	0	100	1	9	0

**WHO Collaborating Laboratory Reports  
2008-2009 Influenza Season  
Update: Friday, September 04, 2009  
Summary by Region**

**HHS Region 7 (IA, KS, MO, NE)**

CDC Week	No. of Reporting Laboratories	No. of Specimens Tested	No. (%) of Specimens Positive for Influenza	Positive specimens by Type / Subtype					
				A(H1)	AH3	AH1SWINE	AUNSUB	AUNK	B
200927	7	389	97 ( 24.94 )	1	1	86	1	8	0
200928	8	511	121 ( 23.68 )	1	1	111	1	6	1
200929	6	512	121 ( 23.63 )	1	0	96	11	13	0
200930	7	548	135 ( 24.64 )	1	1	121	3	9	0
200931	7	467	93 ( 19.91 )	3	1	76	0	12	1
200932	7	441	56 ( 12.70 )	0	1	48	0	7	0
200933	8	378	52 ( 13.76 )	2	1	31	14	4	0
200934	7	509	96 ( 18.86 )	1	1	69	7	18	0
<b>Totals</b>	<b>392</b>	<b>25296</b>	<b>2980 ( 11.78 )</b>	<b>537</b>	<b>86</b>	<b>1149</b>	<b>118</b>	<b>553</b>	<b>537</b>

**HHS Region 8 (CO, MT, ND, SD, UT, WY)**

CDC Week	No. of Reporting Laboratories	No. of Specimens Tested	No. (%) of Specimens Positive for Influenza	Positive specimens by Type / Subtype					
				A(H1)	AH3	AH1SWINE	AUNSUB	AUNK	B
200840	12	101	2 ( 1.98 )	0	0	0	0	1	1
200841	12	126	3 ( 2.38 )	0	0	0	0	1	2
200842	12	151	2 ( 1.32 )	0	1	0	0	1	0
200843	12	131	0 ( 0.00 )	0	0	0	0	0	0
200844	12	191	1 ( 0.52 )	0	1	0	0	0	0
200845	12	227	3 ( 1.32 )	0	0	0	0	2	1
200846	12	230	1 ( 0.43 )	0	0	0	0	1	0
200847	11	291	5 ( 1.72 )	1	1	0	0	3	0
200848	11	229	5 ( 2.18 )	0	1	0	0	4	0
200849	12	309	12 ( 3.88 )	1	2	0	0	7	2
200850	12	340	12 ( 3.53 )	3	4	0	0	5	0
200851	13	416	14 ( 3.37 )	1	6	0	0	7	0
200852	13	362	20 ( 5.52 )	4	4	0	0	12	0
200853	12	485	41 ( 8.45 )	11	7	0	0	23	0
200901	13	486	65 ( 13.37 )	11	3	0	0	50	1
200902	13	563	73 ( 12.97 )	12	3	0	0	52	6
200903	13	516	117 ( 22.67 )	30	8	0	0	71	8
200904	13	806	164 ( 20.35 )	65	18	0	0	69	12
200905	13	833	138 ( 16.57 )	36	2	0	0	87	13
200906	13	982	210 ( 21.38 )	50	5	0	0	137	18
200907	13	1009	194 ( 19.23 )	47	4	0	0	122	21
200908	13	1153	229 ( 19.86 )	25	2	0	0	158	44
200909	13	1189	249 ( 20.94 )	42	4	0	0	148	55
200910	12	942	153 ( 16.24 )	15	9	0	0	88	41
200911	12	842	136 ( 16.15 )	18	6	0	0	62	50
200912	13	596	93 ( 15.60 )	15	3	0	0	39	36

**WHO Collaborating Laboratory Reports  
2008-2009 Influenza Season  
Update: Friday, September 04, 2009  
Summary by Region**

**HHS Region 8 (CO, MT, ND, SD, UT, WY)**

CDC Week	No. of Reporting Laboratories	No. of Specimens Tested	No. (%) of Specimens Positive for Influenza	Positive specimens by Type / Subtype					
				A(H1)	AH3	AH1SWINE	AUNSUB	AUNK	B
200913	11	311	47 ( 15.11 )	1	0	0	0	23	23
200914	12	397	33 ( 8.31 )	2	0	0	0	11	20
200915	11	401	32 ( 7.98 )	1	3	0	0	13	15
200916	11	302	30 ( 9.93 )	2	2	0	0	18	8
200917	15	2937	292 ( 9.94 )	73	65	4	17	60	73
200918	13	3032	287 ( 9.47 )	50	30	51	32	87	37
200919	12	1220	72 ( 5.90 )	5	7	31	0	25	4
200920	14	1053	120 ( 11.40 )	3	6	84	3	20	4
200921	14	1054	279 ( 26.47 )	1	6	227	4	40	1
200922	13	1127	359 ( 31.85 )	1	3	306	1	46	2
200923	10	492	71 ( 14.43 )	3	0	48	0	20	0
200924	13	822	185 ( 22.51 )	1	0	167	0	16	1
200925	13	733	118 ( 16.10 )	0	1	95	0	22	0
200926	14	629	98 ( 15.58 )	0	0	77	2	19	0
200927	13	553	95 ( 17.18 )	0	0	68	2	25	0
200928	13	600	77 ( 12.83 )	1	0	58	2	16	0
200929	14	586	79 ( 13.48 )	1	1	59	3	14	1
200930	13	658	78 ( 11.85 )	1	0	41	3	33	0
200931	13	671	101 ( 15.05 )	0	1	56	3	40	1
200932	11	733	94 ( 12.82 )	0	0	60	3	31	0
200933	10	696	60 ( 8.62 )	0	0	39	1	19	1
200934	8	741	146 ( 19.70 )	7	0	98	4	36	1
<b>Totals</b>	<b>593</b>	<b>33254</b>	<b>4695 ( 14.12 )</b>	<b>540</b>	<b>219</b>	<b>1569</b>	<b>80</b>	<b>1784</b>	<b>503</b>

**HHS Region 9 (AZ, CA, HI, NV)**

CDC Week	No. of Reporting Laboratories	No. of Specimens Tested	No. (%) of Specimens Positive for Influenza	Positive specimens by Type / Subtype					
				A(H1)	AH3	AH1SWINE	AUNSUB	AUNK	B
200840	13	400	6 ( 1.50 )	2	0	0	0	2	2
200841	13	380	7 ( 1.84 )	4	0	0	0	2	1
200842	13	387	20 ( 5.17 )	13	1	0	0	4	2
200843	13	497	30 ( 6.04 )	19	0	0	0	10	1
200844	13	323	18 ( 5.57 )	9	1	0	0	7	1
200845	13	481	35 ( 7.28 )	22	2	0	0	10	1
200846	13	533	26 ( 4.88 )	16	2	0	0	7	1
200847	14	467	22 ( 4.71 )	15	0	0	0	7	0
200848	13	623	41 ( 6.58 )	33	0	0	0	8	0
200849	12	522	30 ( 5.75 )	22	1	0	0	7	0
200850	13	577	32 ( 5.55 )	27	0	0	0	5	0
200851	13	484	24 ( 4.96 )	21	1	0	0	2	0

**WHO Collaborating Laboratory Reports  
2008-2009 Influenza Season  
Update: Friday, September 04, 2009  
Summary by Region**

**HHS Region 9 (AZ, CA, HI, NV)**

CDC Week	No. of Reporting Laboratories	No. of Specimens Tested	No. (%) of Specimens Positive for Influenza	Positive specimens by Type / Subtype					
				A(H1)	AH3	AH1SWINE	AUNSUB	AUNK	B
200852	13	626	21 ( 3.35 )	20	1	0	0	0	0
200853	13	524	30 ( 5.73 )	28	0	0	0	2	0
200901	13	536	35 ( 6.53 )	26	5	0	0	4	0
200902	13	539	34 ( 6.31 )	26	5	0	0	2	1
200903	13	618	45 ( 7.28 )	30	5	0	0	7	3
200904	13	584	76 ( 13.01 )	43	11	0	0	9	13
200905	13	625	79 ( 12.64 )	42	9	0	0	14	14
200906	13	576	109 ( 18.92 )	52	13	0	0	18	26
200907	13	753	107 ( 14.21 )	70	4	0	0	15	18
200908	13	694	148 ( 21.33 )	77	12	0	0	20	39
200909	13	632	135 ( 21.36 )	71	21	0	0	15	28
200910	13	673	130 ( 19.32 )	58	19	0	0	16	37
200911	12	648	122 ( 18.83 )	50	19	0	0	4	49
200912	13	618	134 ( 21.68 )	56	24	0	0	8	46
200913	13	549	70 ( 12.75 )	20	8	0	0	9	33
200914	13	535	80 ( 14.95 )	23	17	0	0	6	34
200915	13	500	52 ( 10.40 )	7	18	0	0	1	26
200916	12	528	54 ( 10.23 )	12	5	1	0	6	30
200917	14	2850	787 ( 27.61 )	115	234	165	12	64	197
200918	11	2638	1138 ( 43.14 )	112	247	509	0	161	109
200919	11	1178	442 ( 37.52 )	12	36	144	9	217	24
200920	10	1399	680 ( 48.61 )	10	24	208	0	420	18
200921	10	1428	670 ( 46.92 )	8	130	232	1	276	23
200922	10	1329	781 ( 58.77 )	11	337	270	2	153	8
200923	11	1557	830 ( 53.31 )	7	194	471	1	147	10
200924	11	1411	805 ( 57.05 )	1	172	488	8	133	3
200925	11	1317	537 ( 40.77 )	1	28	417	6	82	3
200926	10	1629	603 ( 37.02 )	9	26	433	4	129	2
200927	10	2023	948 ( 46.86 )	0	21	788	3	133	3
200928	10	1852	797 ( 43.03 )	0	12	668	8	109	0
200929	10	1478	693 ( 46.89 )	0	6	612	4	71	0
200930	10	1458	663 ( 45.47 )	0	2	605	8	48	0
200931	10	1101	404 ( 36.69 )	0	2	275	3	124	0
200932	9	705	173 ( 24.54 )	10	0	134	2	27	0
200933	9	710	199 ( 28.03 )	0	0	170	3	26	0
200934	5	554	107 ( 19.31 )	0	4	91	0	12	0
<b>Totals</b>	<b>570</b>	<b>43049</b>	<b>13009 ( 30.22 )</b>	<b>1210</b>	<b>1679</b>	<b>6681</b>	<b>74</b>	<b>2559</b>	<b>806</b>

**WHO Collaborating Laboratory Reports  
2008-2009 Influenza Season  
Update: Friday, September 04, 2009  
Summary by Region**

**HHS Region 10 (AK, ID, OR, WA)**

CDC Week	No. of Reporting Laboratories	No. of Specimens Tested	No. (%) of Specimens Positive for Influenza	Positive specimens by Type / Subtype					
				A(H1)	AH3	AH1SWINE	AUNSUB	AUNK	B
200840	5	131	2 ( 1.53 )	1	0	0	0	0	1
200841	6	145	5 ( 3.45 )	0	4	0	0	0	1
200842	6	128	1 ( 0.78 )	0	1	0	0	0	0
200843	6	208	0 ( 0.00 )	0	0	0	0	0	0
200844	4	202	0 ( 0.00 )	0	0	0	0	0	0
200845	6	154	3 ( 1.95 )	2	0	0	0	1	0
200846	5	174	0 ( 0.00 )	0	0	0	0	0	0
200847	6	184	3 ( 1.63 )	1	0	0	0	0	2
200848	5	142	2 ( 1.41 )	0	0	0	0	0	2
200849	4	182	0 ( 0.00 )	0	0	0	0	0	0
200850	6	238	4 ( 1.68 )	0	1	0	0	2	1
200851	6	278	8 ( 2.88 )	4	0	0	0	0	4
200852	6	154	0 ( 0.00 )	0	0	0	0	0	0
200853	5	225	11 ( 4.89 )	6	0	0	0	2	3
200901	6	246	16 ( 6.50 )	3	1	0	0	10	2
200902	5	262	15 ( 5.73 )	4	0	0	0	10	1
200903	4	241	21 ( 8.71 )	6	0	0	0	9	6
200904	6	325	20 ( 6.15 )	5	0	0	0	15	0
200905	6	325	58 ( 17.85 )	24	4	0	0	19	11
200906	6	403	61 ( 15.14 )	10	6	0	0	24	21
200907	6	450	113 ( 25.11 )	43	14	0	0	20	36
200908	6	434	130 ( 29.95 )	23	16	0	0	18	73
200909	6	463	162 ( 34.99 )	18	11	0	0	27	106
200910	6	521	139 ( 26.68 )	15	13	0	0	38	73
200911	6	638	162 ( 25.39 )	27	14	0	0	31	90
200912	6	517	108 ( 20.89 )	17	6	0	0	19	66
200913	6	421	97 ( 23.04 )	11	9	0	0	16	61
200914	5	357	39 ( 10.92 )	5	2	0	0	9	23
200915	5	309	35 ( 11.33 )	5	4	0	0	8	18
200916	6	308	45 ( 14.61 )	11	20	0	0	9	5
200917	6	1700	305 ( 17.94 )	47	71	107	30	12	38
200918	6	1704	433 ( 25.41 )	58	50	248	35	16	26
200919	6	1145	422 ( 36.86 )	26	22	291	65	7	11
200920	6	921	304 ( 33.01 )	12	21	204	53	5	9
200921	6	641	196 ( 30.58 )	3	12	118	12	51	0
200922	6	623	160 ( 25.68 )	0	1	113	3	43	0
200923	6	537	128 ( 23.84 )	1	7	100	1	19	0
200924	6	670	137 ( 20.45 )	0	2	126	2	6	1
200925	6	681	188 ( 27.61 )	0	1	161	8	18	0
200926	6	592	168 ( 28.38 )	0	1	153	0	14	0

**WHO Collaborating Laboratory Reports  
2008-2009 Influenza Season  
Update: Friday, September 04, 2009  
Summary by Region**

**HHS Region 10 (AK, ID, OR, WA)**

<b>CDC Week</b>	<b>No. of Reporting Laboratories</b>	<b>No. of Specimens Tested</b>	<b>No. (%) of Specimens Positive for Influenza</b>	<b>Positive specimens by Type / Subtype</b>					
				<b>A(H1)</b>	<b>AH3</b>	<b>AH1SWINE</b>	<b>AUNSUB</b>	<b>AUNK</b>	<b>B</b>
200927	6	627	201 ( 32.06 )	1	3	181	2	14	0
200928	6	535	190 ( 35.51 )	0	2	178	0	10	0
200929	6	471	155 ( 32.91 )	1	1	147	0	6	0
200930	6	485	181 ( 37.32 )	0	1	169	0	11	0
200931	6	419	121 ( 28.88 )	0	0	116	3	2	0
200932	6	440	108 ( 24.55 )	0	0	105	0	3	0
200933	5	459	95 ( 20.70 )	0	2	87	0	6	0
200934	3	366	57 ( 15.57 )	0	1	54	0	2	0
<b>Totals</b>	271	21781	4809 ( 22.08 )	390	324	2658	214	532	691

**PNEUMONIA AND INFLUENZA MORTALITY**  
**(Reported from 122 U.S. Cities)**  
**For the Week Ending August 29, 2009**  
**(Week 34)**

YEAR	WEEK	% OF DEATHS	EXPECTED	THRESH.	TOTAL DEATHS	PNEUMONIA DEATHS	INFLUENZA DEATHS
2008	40	6.36	5.99	6.43	11295	718	0
2008	41	6.13	6.06	6.49	11302	693	0
2008	42	6.44	6.13	6.57	11017	710	0
2008	43	6.63	6.21	6.65	11470	761	0
2008	44	6.67	6.30	6.74	11281	752	0
2008	45	6.29	6.40	6.83	10934	688	0
2008	46	6.37	6.50	6.93	10679	680	0
2008	47	6.43	6.60	7.03	12011	772	0
2008	48	6.70	6.70	7.14	8674	580	1
2008	49	6.47	6.81	7.24	13317	862	0
2008	50	6.87	6.91	7.34	12452	854	1
2008	51	6.82	7.01	7.44	12236	835	0
2008	52	6.71	7.10	7.53	8662	581	0
2008	53	7.08	7.19	7.62	10224	723	1
2009	1	6.98	7.27	7.70	14783	1031	1
2009	2	7.58	7.34	7.78	13467	1021	0
2009	3	7.09	7.40	7.84	12678	897	2
2009	4	6.97	7.46	7.89	13222	918	4
2009	5	7.15	7.50	7.93	12585	900	0
2009	6	6.86	7.53	7.96	12682	865	5
2009	7	7.42	7.54	7.98	11497	849	4
2009	8	7.20	7.55	7.98	12491	897	2
2009	9	7.39	7.54	7.98	12325	902	9
2009	10	7.02	7.52	7.96	12151	852	1
2009	11	7.09	7.49	7.92	12081	852	4
2009	12	7.30	7.45	7.88	12250	892	2
2009	13	7.48	7.39	7.83	11440	846	10
2009	14	7.82	7.33	7.76	11080	864	3
2009	15	6.83	7.25	7.69	12089	821	5
2009	16	7.20	7.17	7.61	11523	828	2
2009	17	6.91	7.08	7.52	11711	806	3
2009	18	7.17	6.99	7.42	11303	808	2
2009	19	6.66	6.89	7.32	11277	746	5
2009	20	6.66	6.79	7.22	11412	758	2
2009	21	6.33	6.69	7.12	9797	619	1
2009	22	6.36	6.58	7.02	11182	709	2
2009	23	6.97	6.48	6.92	11193	767	13
2009	24	6.67	6.38	6.82	11193	738	9
2009	25	6.60	6.29	6.72	10459	681	9
2009	26	6.55	6.20	6.63	9113	587	10
2009	27	6.43	6.12	6.55	11460	725	12
2009	28	6.66	6.05	6.48	10987	721	11
2009	29	6.32	5.98	6.42	10671	664	10
2009	30	5.94	5.93	6.36	11092	645	14
2009	31	6.11	5.89	6.32	10310	616	14
2009	32	5.90	5.86	6.29	10768	622	13

**PNEUMONIA AND INFLUENZA MORTALITY**  
**(Reported from 122 U.S. Cities)**  
**For the Week Ending August 29, 2009**  
**(Week 34)**

YEAR	WEEK	% OF DEATHS	EXPECTED	THRESH.	TOTAL DEATHS	PNEUMONIA DEATHS	INFLUENZA DEATHS
2009	33	6.10	5.84	6.27	9764	587	9
2009	34	5.79	5.83	6.27	10489	597	10

**U.S. Outpatient Influenza-like Illness Surveillance Network (ILINet)  
2008-2009 Influenza Season  
Update: Friday, September 04, 2009  
Summary for All Regions**

**National Baseline: 2.4%**

<b>CDC Week</b>	<b>Number Reporting</b>	<b>Patient Visits</b>	<b>Total ILI</b>	<b>% Unweighted ILI</b>	<b>% Weighted ILI</b>
200840	1385	530911	4822	0.908	0.939
200841	1472	572292	5844	1.021	0.988
200842	1498	577981	5885	1.018	0.983
200843	1503	594412	6327	1.064	1.031
200844	1522	594534	6761	1.137	1.103
200845	1535	607506	7103	1.169	1.087
200846	1532	592990	7432	1.253	1.123
200847	1544	606437	7674	1.265	1.202
200848	1506	476341	7636	1.603	1.368
200849	1530	595026	8675	1.458	1.313
200850	1525	575577	8661	1.505	1.313
200851	1397	476276	7731	1.623	1.456
200852	1467	401843	8683	2.161	1.810
200853	1471	422658	8584	2.031	2.134
200901	1523	578031	8952	1.549	1.457
200902	1495	561615	9253	1.648	1.627
200903	1552	579666	11522	1.988	1.971
200904	1539	609153	14255	2.340	2.430
200905	1562	639223	18022	2.819	2.955
200906	1548	642425	21237	3.306	3.566
200907	1522	619477	19944	3.219	3.393
200908	1527	655560	20905	3.189	3.519
200909	1518	619815	18361	2.962	3.203
200910	1504	631430	15645	2.478	2.627
200911	1472	599545	13189	2.200	2.470
200912	1447	601888	11293	1.876	2.015
200913	1419	581762	9418	1.619	1.821
200914	1401	560727	8503	1.516	1.622
200915	1394	555013	7175	1.293	1.292
200916	1423	572275	7313	1.278	1.314
200917	1376	609745	18330	3.006	2.763
200918	1398	585067	14515	2.481	2.245
200919	1319	524184	12085	2.305	1.775
200920	1277	519583	20297	3.906	1.936
200921	1285	517593	22304	4.309	1.901
200922	1269	517614	16894	3.264	1.713
200923	1263	474582	12220	2.575	1.787
200924	1231	497715	10601	2.130	1.918
200925	1237	497441	8696	1.748	1.615
200926	1201	463713	7300	1.574	1.480
200927	1196	457829	6079	1.328	1.393
200928	1187	478887	5520	1.153	1.208
200929	1185	474914	5500	1.158	1.145

**U.S. Outpatient Influenza-like Illness Surveillance Network (ILINet)**  
**2008-2009 Influenza Season**  
**Update: Friday, September 04, 2009**  
**Summary for All Regions**

**National Baseline: 2.4%**

<b>CDC Week</b>	<b>Number Reporting</b>	<b>Patient Visits</b>	<b>Total ILI</b>	<b>% Unweighted ILI</b>	<b>% Weighted ILI</b>
200930	1173	449107	5263	1.172	1.214
200931	1136	460509	5298	1.150	1.151
200932	1102	456961	5492	1.202	1.168
200933	1105	476419	8111	1.702	1.396
200934	879	407870	9197	2.255	2.133
<b>Totals</b>	<b>66552</b>	<b>26102122</b>	<b>510507</b>	<b>1.956</b>	<b>1.811</b>

**U.S. Outpatient Influenza-like Illness Surveillance Network (ILINet)  
2008-2009 Influenza Season  
Update: Friday, September 04, 2009  
Summary by Region**

**HHS Region 1 (CT, ME, MA, NH, RI, VT) (Baseline: 1.5 %)**

<b>CDC Week</b>	<b>Number Reporting</b>	<b>Patient Visits</b>	<b>Total ILI</b>	<b>% Unweighted ILI</b>	<b>% Weighted ILI</b>
200840	119	34160	151	0.442	0.451
200841	127	35540	190	0.535	0.598
200842	125	34900	140	0.401	0.446
200843	129	38911	199	0.511	0.550
200844	131	37279	226	0.606	0.629
200845	129	38631	287	0.743	0.797
200846	127	37262	266	0.714	0.789
200847	129	35874	252	0.702	0.801
200848	123	26912	201	0.747	0.824
200849	120	36409	304	0.835	0.891
200850	122	33637	276	0.821	0.896
200851	122	27793	218	0.784	0.886
200852	120	19676	201	1.022	1.001
200853	116	21854	196	0.897	1.054
200901	116	29563	216	0.731	0.628
200902	116	30474	268	0.879	0.791
200903	117	30172	342	1.134	1.331
200904	119	34150	489	1.432	1.559
200905	121	37156	1066	2.869	3.559
200906	121	37939	1293	3.408	3.891
200907	123	35373	1061	2.999	3.015
200908	122	36112	941	2.606	2.746
200909	120	35524	581	1.636	1.680
200910	118	32423	462	1.425	1.443
200911	120	31429	424	1.349	1.474
200912	114	33597	340	1.012	0.975
200913	116	34838	296	0.850	0.855
200914	112	31779	210	0.661	0.689
200915	109	30656	117	0.382	0.377
200916	106	28117	133	0.473	0.547
200917	103	29221	387	1.324	1.465
200918	97	27597	299	1.083	1.096
200919	93	23159	241	1.041	1.233
200920	85	19699	145	0.736	0.678
200921	83	17699	170	0.961	0.824
200922	83	20464	310	1.515	1.384
200923	83	19875	277	1.394	1.452

**U.S. Outpatient Influenza-like Illness Surveillance Network (ILINet)  
2008-2009 Influenza Season  
Update: Friday, September 04, 2009  
Summary by Region**

**HHS Region 1 (CT, ME, MA, NH, RI, VT) (Baseline: 1.5 %)**

<b>CDC Week</b>	<b>Number Reporting</b>	<b>Patient Visits</b>	<b>Total ILI</b>	<b>% Unweighted ILI</b>	<b>% Weighted ILI</b>
200924	83	19784	256	1.294	1.854
200925	81	18518	150	0.810	0.662
200926	81	16659	150	0.900	0.796
200927	82	18453	123	0.667	0.537
200928	77	18606	93	0.500	0.426
200929	75	16833	82	0.487	0.478
200930	75	16134	71	0.440	0.373
200931	72	14333	59	0.412	0.373
200932	67	13748	44	0.320	0.253
200933	64	13710	89	0.649	0.526
200934	53	11667	49	0.420	1.120
<b>Totals</b>	<b>5046</b>	<b>1324299</b>	<b>14341</b>	<b>1.083</b>	<b>1.207</b>

**HHS Region 2 (NJ, NY) (Baseline: 2.9%)**

<b>CDC Week</b>	<b>Number Reporting</b>	<b>Patient Visits</b>	<b>Total ILI</b>	<b>% Unweighted ILI</b>	<b>% Weighted ILI</b>
200840	69	90864	1002	1.103	0.672
200841	81	93098	1154	1.240	0.975
200842	86	95437	1136	1.190	0.828
200843	89	94783	1126	1.188	0.819
200844	89	92229	1156	1.253	0.988
200845	94	99720	1335	1.339	1.211
200846	94	97266	1384	1.423	1.179
200847	96	95300	1431	1.502	1.232
200848	99	87341	1662	1.903	1.605
200849	95	100081	1934	1.932	1.737
200850	97	97787	1875	1.917	1.633
200851	95	95124	2103	2.211	1.634
200852	93	85104	2045	2.403	1.767
200853	89	89637	2196	2.450	2.031
200901	93	96953	2036	2.100	1.656
200902	90	93406	2007	2.149	1.694
200903	95	98414	2372	2.410	2.151
200904	92	96480	2720	2.819	2.729
200905	95	101908	2912	2.857	2.891
200906	94	101542	3187	3.139	3.454
200907	93	98152	3163	3.223	3.674
200908	86	97898	2696	2.754	3.936

**U.S. Outpatient Influenza-like Illness Surveillance Network (ILINet)  
2008-2009 Influenza Season  
Update: Friday, September 04, 2009  
Summary by Region**

**HHS Region 2 (NJ, NY) (Baseline: 2.9%)**

<b>CDC Week</b>	<b>Number Reporting</b>	<b>Patient Visits</b>	<b>Total ILI</b>	<b>% Unweighted ILI</b>	<b>% Weighted ILI</b>
200909	88	93685	2403	2.565	3.545
200910	89	95809	2478	2.586	3.901
200911	84	97381	2362	2.426	3.202
200912	85	99216	2177	2.194	2.440
200913	83	95920	1805	1.882	2.070
200914	73	91213	1624	1.780	1.901
200915	79	90329	1289	1.427	1.430
200916	82	94042	1285	1.366	1.355
200917	78	110687	4852	4.384	2.860
200918	74	100544	3234	3.217	2.188
200919	74	103928	4704	4.526	2.909
200920	68	118523	13809	11.651	5.390
200921	66	118673	15945	13.436	6.441
200922	65	106691	11050	10.357	5.131
200923	64	97592	6496	6.656	4.937
200924	66	93723	4294	4.582	5.543
200925	67	91283	2825	3.095	4.311
200926	62	91927	1932	2.102	2.866
200927	58	87104	1401	1.608	2.000
200928	56	84890	1055	1.243	1.647
200929	57	85833	988	1.151	1.220
200930	50	84459	902	1.068	1.167
200931	49	83778	929	1.109	1.210
200932	46	82994	935	1.127	1.226
200933	40	83868	905	1.079	0.795
200934	30	82035	1033	1.259	1.159
<b>Totals</b>	<b>3737</b>	<b>4564651</b>	<b>135344</b>	<b>2.965</b>	<b>2.461</b>

**HHS Region 3 (DE, DC, MD, PA, VA, WV) (Baseline: 3.5%)**

<b>CDC Week</b>	<b>Number Reporting</b>	<b>Patient Visits</b>	<b>Total ILI</b>	<b>% Unweighted ILI</b>	<b>% Weighted ILI</b>
200840	132	72528	766	1.056	1.276
200841	148	80022	777	0.971	1.172
200842	146	80606	810	1.005	1.078
200843	149	81753	974	1.191	1.294
200844	153	78112	1039	1.330	1.552
200845	162	84957	1088	1.281	1.389
200846	155	81936	1103	1.346	1.507

**U.S. Outpatient Influenza-like Illness Surveillance Network (ILINet)  
2008-2009 Influenza Season  
Update: Friday, September 04, 2009  
Summary by Region**

**HHS Region 3 (DE, DC, MD, PA, VA, WV) (Baseline: 3.5%)**

<b>CDC Week</b>	<b>Number Reporting</b>	<b>Patient Visits</b>	<b>Total ILI</b>	<b>% Unweighted ILI</b>	<b>% Weighted ILI</b>
200847	160	80230	1123	1.400	1.658
200848	160	71030	1222	1.720	1.828
200849	160	84056	1432	1.704	1.796
200850	163	83262	1431	1.719	1.898
200851	85	24904	394	1.582	1.475
200852	163	70868	1590	2.244	2.515
200853	160	43910	880	2.004	2.381
200901	163	85097	1445	1.698	1.661
200902	160	80271	1371	1.708	1.857
200903	167	84829	1608	1.896	1.964
200904	165	84285	2096	2.487	2.357
200905	167	88399	2556	2.891	2.876
200906	168	91651	3579	3.905	5.042
200907	160	90626	3668	4.047	5.010
200908	169	95838	4640	4.842	7.177
200909	169	88055	3418	3.882	4.658
200910	166	89680	2460	2.743	3.222
200911	166	88894	2265	2.548	3.655
200912	168	90046	2024	2.248	3.134
200913	162	87629	1921	2.192	3.827
200914	158	83088	1485	1.787	2.906
200915	155	78028	1249	1.601	2.638
200916	165	83581	1061	1.269	1.678
200917	163	92608	2266	2.447	2.322
200918	168	89543	2184	2.439	2.313
200919	162	86515	1531	1.770	1.762
200920	156	83437	1435	1.720	2.038
200921	149	79569	1340	1.684	1.820
200922	146	77531	1215	1.567	1.711
200923	154	82532	1596	1.934	2.091
200924	146	81094	1938	2.390	2.432
200925	144	78152	1642	2.101	2.048
200926	143	75461	1316	1.744	1.406
200927	144	75682	1096	1.448	1.196
200928	139	69390	942	1.358	1.281
200929	143	73881	879	1.190	1.095
200930	138	73272	856	1.168	1.441

**U.S. Outpatient Influenza-like Illness Surveillance Network (ILINet)  
2008-2009 Influenza Season  
Update: Friday, September 04, 2009  
Summary by Region**

**HHS Region 3 (DE, DC, MD, PA, VA, WV) (Baseline: 3.5%)**

<b>CDC Week</b>	<b>Number Reporting</b>	<b>Patient Visits</b>	<b>Total ILI</b>	<b>% Unweighted ILI</b>	<b>% Weighted ILI</b>
200931	141	75613	859	1.136	0.923
200932	142	74773	807	1.079	0.931
200933	135	74804	891	1.191	1.083
200934	129	70884	901	1.271	1.126
<b>Totals</b>	<b>7366</b>	<b>3822912</b>	<b>75169</b>	<b>1.966</b>	<b>2.315</b>

**HHS Region 4 (AL, FL, GA, KY, MS, NC, SC, TN) (Baseline: 2.0%)**

<b>CDC Week</b>	<b>Number Reporting</b>	<b>Patient Visits</b>	<b>Total ILI</b>	<b>% Unweighted ILI</b>	<b>% Weighted ILI</b>
200840	326	110601	1013	0.916	0.826
200841	347	130362	1726	1.324	1.000
200842	353	130637	1626	1.245	0.947
200843	362	138166	1770	1.281	0.989
200844	370	147228	2113	1.435	1.152
200845	354	140474	2134	1.519	1.154
200846	371	142585	2433	1.706	1.337
200847	377	149867	2433	1.623	1.339
200848	353	108418	2292	2.114	1.546
200849	370	137689	2501	1.816	1.428
200850	365	128538	2632	2.048	1.561
200851	355	127621	2394	1.876	1.399
200852	344	78554	2421	3.082	1.884
200853	350	97941	2444	2.495	1.599
200901	360	131048	2207	1.684	1.182
200902	357	129899	2272	1.749	1.349
200903	382	128837	3015	2.340	1.731
200904	378	149435	3787	2.534	1.983
200905	387	146811	4872	3.319	2.754
200906	366	151745	5997	3.952	3.487
200907	368	145714	5098	3.499	3.125
200908	364	155936	5522	3.541	3.166
200909	358	137256	4863	3.543	3.122
200910	358	137606	4169	3.030	2.483
200911	351	138816	3073	2.214	1.945
200912	346	142281	2571	1.807	1.472
200913	319	130664	1902	1.456	1.192
200914	326	124813	1809	1.449	1.115
200915	322	121105	1677	1.385	0.972

**U.S. Outpatient Influenza-like Illness Surveillance Network (ILINet)  
2008-2009 Influenza Season  
Update: Friday, September 04, 2009  
Summary by Region**

**HHS Region 4 (AL, FL, GA, KY, MS, NC, SC, TN) (Baseline: 2.0%)**

<b>CDC Week</b>	<b>Number Reporting</b>	<b>Patient Visits</b>	<b>Total ILI</b>	<b>% Unweighted ILI</b>	<b>% Weighted ILI</b>
200916	332	134679	1694	1.258	0.882
200917	317	134455	3347	2.489	1.838
200918	338	130650	3098	2.371	1.782
200919	276	90057	1333	1.480	1.066
200920	258	86499	1037	1.199	0.843
200921	303	91640	1287	1.404	0.980
200922	306	93210	1064	1.142	0.864
200923	308	92830	1067	1.149	0.845
200924	300	96034	1156	1.204	0.972
200925	301	96149	1458	1.516	1.159
200926	282	86706	1565	1.805	1.308
200927	281	88886	1217	1.369	1.342
200928	295	97597	1398	1.432	1.263
200929	293	97516	1454	1.491	1.325
200930	297	88209	1397	1.584	1.404
200931	276	84716	1483	1.751	1.564
200932	266	80554	1620	2.011	1.498
200933	301	101762	3039	2.986	2.354
200934	269	104805	5171	4.934	4.346
<b>Totals</b>	<b>15938</b>	<b>5717601</b>	<b>117651</b>	<b>2.058</b>	<b>1.658</b>

**HHS Region 5 (IL, IN, MI, MN, OH, WI) (Baseline: 1.9%)**

<b>CDC Week</b>	<b>Number Reporting</b>	<b>Patient Visits</b>	<b>Total ILI</b>	<b>% Unweighted ILI</b>	<b>% Weighted ILI</b>
200840	228	82486	579	0.702	0.642
200841	238	87207	595	0.682	0.577
200842	243	89741	672	0.749	0.599
200843	245	91308	750	0.821	0.680
200844	245	88975	671	0.754	0.644
200845	253	93474	810	0.867	0.750
200846	248	89217	829	0.929	0.838
200847	248	91710	851	0.928	0.810
200848	245	69324	848	1.223	0.988
200849	242	85883	883	1.028	0.973
200850	249	86575	950	1.097	0.976
200851	234	72388	882	1.218	1.091
200852	232	55399	860	1.552	1.302
200853	233	60510	902	1.491	1.269

**U.S. Outpatient Influenza-like Illness Surveillance Network (ILINet)  
2008-2009 Influenza Season  
Update: Friday, September 04, 2009  
Summary by Region**

**HHS Region 5 (IL, IN, MI, MN, OH, WI) (Baseline: 1.9%)**

<b>CDC Week</b>	<b>Number Reporting</b>	<b>Patient Visits</b>	<b>Total ILI</b>	<b>% Unweighted ILI</b>	<b>% Weighted ILI</b>
200901	251	84607	932	1.102	0.987
200902	244	78166	905	1.158	1.021
200903	237	80242	1117	1.392	1.276
200904	236	78732	1324	1.682	1.660
200905	247	94377	1882	1.994	1.962
200906	242	92435	2084	2.255	2.248
200907	237	86001	2163	2.515	2.521
200908	236	92234	2222	2.409	2.339
200909	233	91483	2493	2.725	2.601
200910	229	86410	2088	2.416	2.247
200911	226	87463	1621	1.853	1.808
200912	229	86045	1414	1.643	1.499
200913	218	83135	1189	1.430	1.270
200914	218	80636	1015	1.259	1.118
200915	218	81815	969	1.184	0.907
200916	220	81363	899	1.105	0.899
200917	212	79249	1943	2.452	1.784
200918	204	72858	1586	2.177	1.615
200919	204	67922	1241	1.827	1.329
200920	199	64752	1214	1.875	1.423
200921	184	56035	1120	1.999	1.367
200922	185	58536	1125	1.922	1.375
200923	182	57150	1080	1.890	1.431
200924	186	59408	1120	1.885	1.569
200925	185	65388	827	1.265	0.942
200926	178	57317	591	1.031	0.765
200927	179	62795	529	0.842	0.695
200928	172	61279	484	0.790	0.659
200929	173	55985	492	0.879	0.690
200930	174	55868	487	0.872	0.662
200931	171	57340	545	0.950	0.691
200932	163	55885	542	0.970	0.774
200933	155	54367	435	0.800	0.588
200934	124	48560	431	0.888	0.702
<b>Totals</b>	10334	3600035	51191	1.422	1.229

**U.S. Outpatient Influenza-like Illness Surveillance Network (ILINet)  
2008-2009 Influenza Season  
Update: Friday, September 04, 2009  
Summary by Region**

**HHS Region 6 (AR, LA, NM, OK, TX) (Baseline: 4.6%)**

<b>CDC Week</b>	<b>Number Reporting</b>	<b>Patient Visits</b>	<b>Total ILI</b>	<b>% Unweighted ILI</b>	<b>% Weighted ILI</b>
200840	136	32696	513	1.569	1.570
200841	148	35216	560	1.590	1.603
200842	150	34555	470	1.360	1.392
200843	135	32768	511	1.559	1.529
200844	147	36070	730	2.024	2.167
200845	143	35258	541	1.534	1.624
200846	150	36137	522	1.445	1.487
200847	148	35053	633	1.806	1.855
200848	137	26537	554	2.088	2.178
200849	149	35887	641	1.786	1.781
200850	130	30972	536	1.731	1.638
200851	122	28522	700	2.454	2.468
200852	132	19926	637	3.197	2.875
200853	124	25174	688	2.733	4.334
200901	133	31807	710	2.232	2.357
200902	130	33159	946	2.853	3.162
200903	156	41555	1441	3.468	3.710
200904	148	38526	1825	4.737	5.282
200905	147	42798	2298	5.369	5.954
200906	157	41862	2511	5.998	6.501
200907	151	43234	2104	4.867	5.259
200908	149	42887	1765	4.115	4.261
200909	150	39774	1534	3.857	4.102
200910	149	60338	1280	2.121	2.482
200911	150	35830	1118	3.120	3.395
200912	142	36209	845	2.334	2.449
200913	147	34717	691	1.990	2.105
200914	152	35843	836	2.332	2.382
200915	147	36679	537	1.464	1.505
200916	159	37973	687	1.809	1.865
200917	149	41859	1807	4.317	4.198
200918	141	40527	1431	3.531	3.365
200919	148	37751	1197	3.171	3.058
200920	144	36474	875	2.399	2.439
200921	147	56076	843	1.503	1.492
200922	150	63759	714	1.120	1.093
200923	149	33662	502	1.491	1.739

**U.S. Outpatient Influenza-like Illness Surveillance Network (ILINet)  
2008-2009 Influenza Season  
Update: Friday, September 04, 2009  
Summary by Region**

**HHS Region 6 (AR, LA, NM, OK, TX) (Baseline: 4.6%)**

<b>CDC Week</b>	<b>Number Reporting</b>	<b>Patient Visits</b>	<b>Total ILI</b>	<b>% Unweighted ILI</b>	<b>% Weighted ILI</b>
200924	140	60865	603	0.991	0.858
200925	139	56030	554	0.989	0.894
200926	147	59587	669	1.123	0.995
200927	141	39682	665	1.676	1.464
200928	144	59846	687	1.148	0.931
200929	138	58974	657	1.114	0.958
200930	137	32803	531	1.619	1.180
200931	134	60282	505	0.838	0.750
200932	125	60305	612	1.015	0.898
200933	141	66954	1751	2.615	1.714
200934	90	29225	648	2.217	2.917
<b>Totals</b>	<b>6822</b>	<b>1972623</b>	<b>44615</b>	<b>2.262</b>	<b>2.276</b>

**HHS Region 7 (IA, KS, MO, NE) (Baseline: 1.8%)**

<b>CDC Week</b>	<b>Number Reporting</b>	<b>Patient Visits</b>	<b>Total ILI</b>	<b>% Unweighted ILI</b>	<b>% Weighted ILI</b>
200840	62	14113	46	0.326	0.296
200841	65	12996	47	0.362	0.292
200842	70	16626	74	0.445	0.388
200843	70	16066	70	0.436	0.377
200844	67	15207	43	0.283	0.238
200845	70	15987	40	0.250	0.246
200846	65	12675	61	0.481	0.382
200847	71	15817	106	0.670	0.628
200848	68	11414	54	0.473	0.364
200849	70	15804	48	0.304	0.301
200850	69	15217	43	0.283	0.275
200851	66	10741	69	0.642	0.709
200852	66	7850	35	0.446	0.417
200853	67	9968	40	0.401	0.350
200901	69	14400	63	0.438	0.406
200902	67	14173	62	0.437	0.403
200903	67	14493	91	0.628	0.590
200904	67	13936	149	1.069	1.004
200905	67	15920	204	1.281	1.155
200906	67	16438	254	1.545	1.426
200907	65	16157	279	1.727	1.648
200908	65	16150	377	2.334	2.083

**U.S. Outpatient Influenza-like Illness Surveillance Network (ILINet)  
2008-2009 Influenza Season  
Update: Friday, September 04, 2009  
Summary by Region**

**HHS Region 7 (IA, KS, MO, NE) (Baseline: 1.8%)**

<b>CDC Week</b>	<b>Number Reporting</b>	<b>Patient Visits</b>	<b>Total ILI</b>	<b>% Unweighted ILI</b>	<b>% Weighted ILI</b>
200909	67	16740	432	2.581	2.366
200910	67	16319	268	1.642	1.564
200911	64	14429	250	1.733	1.623
200912	62	12476	175	1.403	1.231
200913	66	15231	172	1.129	1.023
200914	60	11554	115	0.995	0.990
200915	63	14997	79	0.527	0.442
200916	60	13762	89	0.647	0.543
200917	57	14590	141	0.966	0.758
200918	57	14263	123	0.862	0.765
200919	51	10260	116	1.131	1.010
200920	53	10827	96	0.887	0.793
200921	54	9453	85	0.899	0.792
200922	47	9413	47	0.499	0.425
200923	46	9079	39	0.430	0.367
200924	44	8826	26	0.295	0.194
200925	48	9559	46	0.481	0.347
200926	49	9197	38	0.413	0.303
200927	47	9069	37	0.408	0.306
200928	46	8574	50	0.583	0.409
200929	45	9272	64	0.690	0.449
200930	44	9259	54	0.583	0.506
200931	45	8564	46	0.537	0.400
200932	46	9550	78	0.817	0.500
200933	41	9189	71	0.773	0.524
200934	31	7696	145	1.884	1.681
<b>Totals</b>	<b>2840</b>	<b>604296</b>	<b>5137</b>	<b>0.850</b>	<b>0.753</b>

**HHS Region 8 (CO, MT, ND, SD, UT, WY) (Baseline: 1.5%)**

<b>CDC Week</b>	<b>Number Reporting</b>	<b>Patient Visits</b>	<b>Total ILI</b>	<b>% Unweighted ILI</b>	<b>% Weighted ILI</b>
200840	75	35331	137	0.388	0.397
200841	73	34679	104	0.300	0.215
200842	78	35114	201	0.572	0.526
200843	79	36462	174	0.477	0.505
200844	75	35139	142	0.404	0.497
200845	80	38088	177	0.465	0.556
200846	77	37989	122	0.321	0.240

**U.S. Outpatient Influenza-like Illness Surveillance Network (ILINet)  
2008-2009 Influenza Season  
Update: Friday, September 04, 2009  
Summary by Region**

**HHS Region 8 (CO, MT, ND, SD, UT, WY) (Baseline: 1.5%)**

<b>CDC Week</b>	<b>Number Reporting</b>	<b>Patient Visits</b>	<b>Total ILI</b>	<b>% Unweighted ILI</b>	<b>% Weighted ILI</b>
200847	74	38333	123	0.321	0.245
200848	77	28027	142	0.507	0.444
200849	76	36641	154	0.420	0.361
200850	77	36452	153	0.420	0.362
200851	72	33245	128	0.385	0.373
200852	72	24054	159	0.661	0.618
200853	73	27574	142	0.515	0.387
200901	77	38582	169	0.438	0.380
200902	71	36039	166	0.461	0.417
200903	76	38091	229	0.601	0.550
200904	75	39322	285	0.725	0.701
200905	71	40460	433	1.070	1.012
200906	72	39280	435	1.107	1.070
200907	63	35505	355	1.000	1.064
200908	73	40832	578	1.416	1.407
200909	74	40315	579	1.436	1.331
200910	72	39733	602	1.515	1.499
200911	70	39146	522	1.333	1.314
200912	65	32859	360	1.096	0.988
200913	67	34331	329	0.958	0.939
200914	61	32382	184	0.568	0.696
200915	65	35834	224	0.625	0.576
200916	65	34959	259	0.741	0.529
200917	62	35491	325	0.916	0.768
200918	70	38204	452	1.183	1.124
200919	69	35885	253	0.705	0.523
200920	68	35056	252	0.719	0.660
200921	70	30508	300	0.983	0.802
200922	65	33383	326	0.977	0.907
200923	61	30285	288	0.951	0.869
200924	61	29761	371	1.247	1.161
200925	63	31544	322	1.021	0.904
200926	59	25483	220	0.863	0.899
200927	59	28182	144	0.511	0.581
200928	58	29621	77	0.260	0.276
200929	60	28220	80	0.283	0.306
200930	59	31143	131	0.421	0.428

**U.S. Outpatient Influenza-like Illness Surveillance Network (ILINet)  
2008-2009 Influenza Season  
Update: Friday, September 04, 2009  
Summary by Region**

**HHS Region 8 (CO, MT, ND, SD, UT, WY) (Baseline: 1.5%)**

<b>CDC Week</b>	<b>Number Reporting</b>	<b>Patient Visits</b>	<b>Total ILI</b>	<b>% Unweighted ILI</b>	<b>% Weighted ILI</b>
200931	58	29954	84	0.280	0.331
200932	58	30473	61	0.200	0.216
200933	49	26959	80	0.297	0.327
200934	45	26591	108	0.406	0.377
<b>Totals</b>	<b>3269</b>	<b>1631541</b>	<b>11641</b>	<b>0.713</b>	<b>0.696</b>

**HHS Region 9 (AZ, CA, HI, NV) (Baseline: 2.7%)**

<b>CDC Week</b>	<b>Number Reporting</b>	<b>Patient Visits</b>	<b>Total ILI</b>	<b>% Unweighted ILI</b>	<b>% Weighted ILI</b>
200840	201	51693	530	1.025	1.233
200841	207	54983	591	1.075	1.254
200842	203	52415	631	1.204	1.420
200843	199	56049	632	1.128	1.357
200844	200	56191	506	0.901	0.867
200845	203	52617	534	1.015	0.883
200846	201	50269	593	1.180	1.010
200847	197	56439	604	1.070	1.054
200848	198	41894	571	1.363	1.074
200849	206	55149	642	1.164	1.118
200850	209	55186	632	1.145	1.121
200851	203	48785	709	1.453	1.518
200852	202	36041	655	1.817	1.955
200853	211	40247	976	2.425	3.147
200901	213	58939	1079	1.831	2.181
200902	214	58508	1133	1.936	2.148
200903	211	55398	1166	2.105	2.442
200904	214	66091	1425	2.156	2.633
200905	213	63207	1591	2.517	2.827
200906	215	60720	1653	2.722	3.174
200907	217	59954	1709	2.851	3.064
200908	218	68768	1805	2.625	3.104
200909	216	66418	1672	2.517	2.929
200910	213	65199	1437	2.204	2.356
200911	203	58904	1205	2.046	2.142
200912	199	61844	1127	1.822	2.257
200913	197	56138	894	1.593	2.050
200914	200	60740	1033	1.701	1.703
200915	194	57392	888	1.547	1.598

**U.S. Outpatient Influenza-like Illness Surveillance Network (ILINet)**  
**2008-2009 Influenza Season**  
**Update: Friday, September 04, 2009**  
**Summary by Region**

**HHS Region 9 (AZ, CA, HI, NV) (Baseline: 2.7%)**

<b>CDC Week</b>	<b>Number Reporting</b>	<b>Patient Visits</b>	<b>Total ILI</b>	<b>% Unweighted ILI</b>	<b>% Weighted ILI</b>
200916	197	56779	1070	1.884	2.033
200917	197	63791	3003	4.708	5.320
200918	208	62490	1784	2.855	3.129
200919	205	60937	1242	2.038	1.792
200920	207	56689	1209	2.133	1.816
200921	195	52635	1069	2.031	1.911
200922	186	47912	870	1.816	1.945
200923	181	45321	747	1.648	1.875
200924	172	42321	716	1.692	2.405
200925	175	45079	747	1.657	2.181
200926	169	36163	736	2.035	2.731
200927	174	42530	797	1.874	2.625
200928	171	43670	674	1.543	2.307
200929	173	43794	736	1.681	2.142
200930	169	52141	734	1.408	2.186
200931	162	40591	735	1.811	2.301
200932	163	43015	706	1.641	2.188
200933	158	39633	753	1.900	2.276
200934	88	21817	533	2.443	2.444
<b>Totals</b>	<b>9327</b>	<b>2523486</b>	<b>47484</b>	<b>1.882</b>	<b>2.146</b>

**HHS Region 10 (AK, ID, OR, WA) (Baseline:3.5%)**

<b>CDC Week</b>	<b>Number Reporting</b>	<b>Patient Visits</b>	<b>Total ILI</b>	<b>% Unweighted ILI</b>	<b>% Weighted ILI</b>
200840	37	6439	85	1.320	1.280
200841	38	8189	100	1.221	1.282
200842	44	7950	125	1.572	1.663
200843	46	8146	121	1.485	1.569
200844	45	8104	135	1.666	1.749
200845	47	8300	157	1.892	2.066
200846	44	7654	119	1.555	1.567
200847	44	7814	118	1.510	1.576
200848	46	5444	90	1.653	1.706
200849	42	7427	136	1.831	1.851
200850	44	7951	133	1.673	1.637
200851	43	7153	134	1.873	1.962
200852	43	4371	80	1.830	1.802
200853	48	5843	120	2.054	2.268

**U.S. Outpatient Influenza-like Illness Surveillance Network (ILINet)  
2008-2009 Influenza Season  
Update: Friday, September 04, 2009  
Summary by Region**

**HHS Region 10 (AK, ID, OR, WA) (Baseline:3.5%)**

<b>CDC Week</b>	<b>Number Reporting</b>	<b>Patient Visits</b>	<b>Total ILI</b>	<b>% Unweighted ILI</b>	<b>% Weighted ILI</b>
200901	48	7035	95	1.350	1.421
200902	46	7520	123	1.636	1.583
200903	44	7635	141	1.847	2.120
200904	45	8196	155	1.891	2.069
200905	47	8187	208	2.541	2.868
200906	46	8813	244	2.769	3.144
200907	45	8761	344	3.926	3.953
200908	45	8905	359	4.031	4.369
200909	43	10565	386	3.654	4.584
200910	43	7913	401	5.068	5.565
200911	38	7253	349	4.812	4.892
200912	37	7315	260	3.554	3.944
200913	44	9159	219	2.391	2.955
200914	41	8679	192	2.212	2.541
200915	42	8178	146	1.785	1.825
200916	37	7020	136	1.937	2.202
200917	38	7794	259	3.323	3.517
200918	41	8391	324	3.861	4.278
200919	37	7770	227	2.921	2.957
200920	39	7627	225	2.950	3.732
200921	34	5305	145	2.733	2.990
200922	36	6715	173	2.576	2.875
200923	35	6256	128	2.046	2.449
200924	33	5899	121	2.051	2.388
200925	34	5739	125	2.178	2.587
200926	31	5213	83	1.592	1.582
200927	31	5446	70	1.285	1.612
200928	29	5414	60	1.108	1.284
200929	28	4606	68	1.476	1.144
200930	30	5819	100	1.719	1.015
200931	28	5338	53	0.993	0.723
200932	26	5664	87	1.536	1.170
200933	21	5173	97	1.875	0.847
200934	20	4590	178	3.878	1.661
<b>Totals</b>	<b>1873</b>	<b>340678</b>	<b>7934</b>	<b>2.329</b>	<b>2.470</b>

WEEKLY INFLUENZA ACTIVITY ESTIMATE  
 REPORTED BY STATE AND TERRITORIAL HEALTH DEPARTMENTS  
 UNITED STATES INFLUENZA SURVEILLANCE SEASON 2008-09

UPDATE - Week 34 (August 23-29, 2009)

REPORTING AREA	WEEK 30	WEEK 31	WEEK 32	WEEK 33	WEEK 34
REGION 1					
MAINE	WIDESPR	WIDESPR	WIDESPR	REGIONAL	NONE
N.H.	SPORADIC	SPORADIC	SPORADIC	NONE	SPORADIC
VERMONT	SPORADIC	SPORADIC	SPORADIC	SPORADIC	SPORADIC
MASS.	SPORADIC	LOCAL	LOCAL	SPORADIC	SPORADIC
R.I.	LOCAL	SPORADIC	SPORADIC	SPORADIC	NONE
CONN.	LOCAL	LOCAL	SPORADIC	SPORADIC	SPORADIC
REGION 2					
NEW YORK	REGIONAL	SPORADIC	SPORADIC	SPORADIC	SPORADIC
NEW JERSEY	REGIONAL	REGIONAL	REGIONAL	REGIONAL	REGIONAL
PUERTO RICO	WIDESPR	WIDESPR	REGIONAL	WIDESPR	WIDESPR
VIRGIN IS.	NO REPT.	NO REPT.	NO REPT.	NO REPT.	NO REPT.
REGION 3					
PENN.	REGIONAL	LOCAL	LOCAL	LOCAL	LOCAL
DELAWARE	SPORADIC	SPORADIC	SPORADIC	SPORADIC	SPORADIC
MARYLAND	LOCAL	REGIONAL	LOCAL	SPORADIC	REGIONAL
D.C.	LOCAL	LOCAL	LOCAL	LOCAL	LOCAL
VIRGINIA	LOCAL	LOCAL	LOCAL	LOCAL	REGIONAL
W. VIRGINIA	REGIONAL	REGIONAL	LOCAL	SPORADIC	LOCAL
REGION 4					
N. CAROLINA	REGIONAL	REGIONAL	REGIONAL	REGIONAL	REGIONAL
S. CAROLINA	SPORADIC	WIDESPR	LOCAL	REGIONAL	WIDESPR
GEORGIA	REGIONAL	REGIONAL	REGIONAL	WIDESPR	WIDESPR
FLORIDA	REGIONAL	REGIONAL	REGIONAL	REGIONAL	WIDESPR
KENTUCKY	SPORADIC	SPORADIC	REGIONAL	REGIONAL	REGIONAL
TENNESSEE	LOCAL	LOCAL	LOCAL	LOCAL	REGIONAL
ALABAMA	SPORADIC	SPORADIC	LOCAL	REGIONAL	WIDESPR
MISSISSIPPI	SPORADIC	SPORADIC	SPORADIC	REGIONAL	WIDESPR
REGION 5					
OHIO	SPORADIC	SPORADIC	SPORADIC	SPORADIC	LOCAL
INDIANA	SPORADIC	SPORADIC	SPORADIC	SPORADIC	SPORADIC
ILLINOIS	SPORADIC	SPORADIC	SPORADIC	SPORADIC	SPORADIC
MICHIGAN	LOCAL	SPORADIC	SPORADIC	SPORADIC	SPORADIC
WISCONSIN	SPORADIC	SPORADIC	SPORADIC	SPORADIC	SPORADIC
MINNESOTA	LOCAL	LOCAL	SPORADIC	SPORADIC	SPORADIC
REGION 6					
ARKANSAS	REGIONAL	LOCAL	LOCAL	LOCAL	LOCAL
LOUISIANA	SPORADIC	SPORADIC	LOCAL	LOCAL	REGIONAL
OKLAHOMA	SPORADIC	SPORADIC	SPORADIC	REGIONAL	REGIONAL
TEXAS	LOCAL	LOCAL	LOCAL	LOCAL	LOCAL
NEW MEXICO	SPORADIC	SPORADIC	SPORADIC	LOCAL	LOCAL

REGION 7					
IOWA	LOCAL	SPORADIC	SPORADIC	SPORADIC	SPORADIC
MISSOURI	SPORADIC	SPORADIC	SPORADIC	SPORADIC	SPORADIC
NEBRASKA	SPORADIC	SPORADIC	SPORADIC	REGIONAL	REGIONAL
KANSAS	SPORADIC	SPORADIC	SPORADIC	SPORADIC	LOCAL
REGION 8					
NORTH DAKOTA	SPORADIC	SPORADIC	SPORADIC	SPORADIC	SPORADIC
SOUTH DAKOTA	SPORADIC	SPORADIC	SPORADIC	SPORADIC	SPORADIC
MONTANA	REGIONAL	REGIONAL	LOCAL	LOCAL	LOCAL
WYOMING	SPORADIC	LOCAL	LOCAL	SPORADIC	SPORADIC
COLORADO	SPORADIC	SPORADIC	SPORADIC	SPORADIC	REGIONAL
UTAH	SPORADIC	SPORADIC	SPORADIC	SPORADIC	SPORADIC
REGION 9					
ARIZONA	REGIONAL	REGIONAL	LOCAL	LOCAL	REGIONAL
NEVADA	REGIONAL	REGIONAL	REGIONAL	REGIONAL	REGIONAL
CALIFORNIA	WIDESPR	REGIONAL	REGIONAL	REGIONAL	REGIONAL
HAWAII	WIDESPR	WIDESPR	REGIONAL	REGIONAL	LOCAL
GUAM	NO REPT.	NO REPT.	NO REPT.	NO REPT.	NO REPT.
REGION 10					
IDAHO	LOCAL	SPORADIC	SPORADIC	SPORADIC	SPORADIC
WASHINGTON	LOCAL	LOCAL	SPORADIC	LOCAL	LOCAL
OREGON	LOCAL	SPORADIC	SPORADIC	SPORADIC	SPORADIC
ALASKA	WIDESPR	WIDESPR	WIDESPR	WIDESPR	WIDESPR

Activity Level	ILI activity*/Outbreaks		Laboratory data
No activity	Low	And	No lab confirmed cases <sup>†</sup>
Sporadic	Not increased	And	Isolated lab-confirmed cases
	OR		
Local	Not increased	And	Lab confirmed outbreak in one institution <sup>‡</sup>
	Increased ILI in 1 region**; ILI activity in other regions is not increased	And	Recent (within the past 3 weeks) lab evidence of influenza in region with increased ILI
	OR		
Regional (doesn't apply to states with ≤4 regions)	2 or more institutional outbreaks (ILI or lab confirmed) in 1 region; ILI activity in other regions is not increased	And	Recent (within the past 3 weeks) lab evidence of influenza in region with the outbreaks; virus activity is no greater than sporadic in other regions
	Increased ILI in ≥2 but less than half of the regions	And	Recent (within the past 3 weeks) lab confirmed influenza in the affected regions
	OR		
Widespread	Institutional outbreaks (ILI or lab confirmed) in ≥2 and less than half of the regions	And	Recent (within the past 3 weeks) lab confirmed influenza in the affected regions
	Increased ILI and/or institutional outbreaks (ILI or lab confirmed) in at least half of the regions	And	Recent (within the past 3 weeks) lab confirmed influenza in the state.

\* ILI activity can be assessed using a variety of data sources including sentinel providers, school/workplace absenteeism, and other syndromic surveillance systems that monitor influenza-like illness.

<sup>†</sup> Lab confirmed case = case confirmed by rapid diagnostic test, antigen detection, culture, or PCR.

<sup>‡</sup> Institution includes nursing home, hospital, prison, school, etc.

\*\*Region: population under surveillance in a defined geographical subdivision of a state.